

## ACE2 antibody [HL1092]

Cat. No. GTX636265

宿主	Rabbit
克隆	Monoclonal
同种型	IgG
实验应用	WB, ICC/IF, IHC-P
种属反应	Human, Cat, Dog, African green monkey

## 实验应用

## 应用说明

\*最佳稀释倍数与浓度应由研究人员确认

Suggested dilution	Recommended dilution
WB	Assay dependent
ICC/IF	Assay dependent
IHC-P	Assay dependent

以下为常规应用缩写的中文注解

WB: 免疫印迹

ICC/IF: 细胞染色

IHC-P: 石蜡切片

IHC-Fr: 冰冻切片

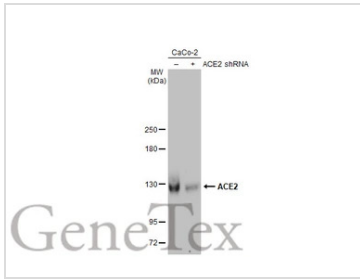
## 属性

形式	Liquid
存储溶液	PBS
保存剂	No preservatives
存放说明	Store as concentrated solution. Centrifuge briefly prior to opening vial. For short-term storage (1-2 weeks), store at 4°C. For long-term storage, aliquot and store at -20°C or below. Avoid multiple freeze-thaw cycles.
浓度	1 mg/ml (Please refer to the vial label for the specific concentration.)
偶联	Unconjugated
RRID	AB_2909957
注意事项	仅供实验室使用。不适用于人类或动物的任何临床, 治疗或诊断用途。不适合动物或人类食用。

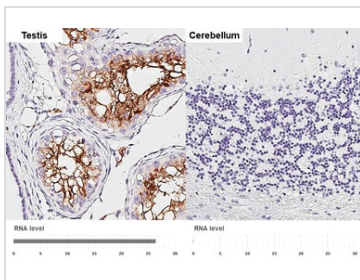


For full product information, images and publications, please visit our [website](#).

## 產品圖片

**GTX636265 WB Image**

Non-transfected (-) and transfected (+) 293T whole cell extracts (50  $\mu$ g) were separated by 5% SDS-PAGE, and the membrane was blotted with ACE2 antibody [HL1092] (GTX636265) diluted at 1:1000. The HRP-conjugated anti-rabbit IgG antibody (GTX213110-01) was used to detect the primary antibody, and the signal was developed with Trident ECL plus-Enhanced.

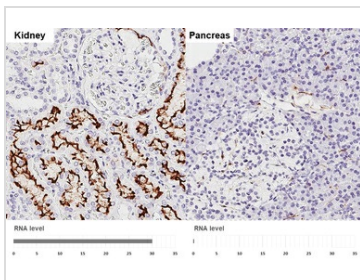
**GTX636265 IHC-P Image**

ACE2 antibody [HL1092] detects ACE2 protein by immunohistochemical analysis. Sample: Paraffin-embedded human tissues.

ACE2 stained by ACE2 antibody [HL1092] (GTX636265) diluted at 1:10000.

Antigen Retrieval: Tris-EDTA buffer, pH 9.0, 15 min

Corresponding RNA levels (RPKM) in the tissues are based on NCBI database.

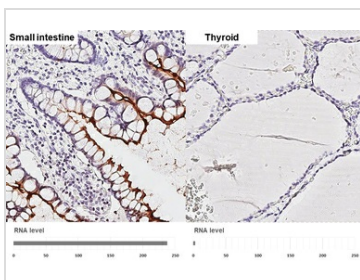
**GTX636265 IHC-P Image**

ACE2 antibody [HL1092] detects ACE2 protein by immunohistochemical analysis. Sample: Paraffin-embedded human tissues.

ACE2 stained by ACE2 antibody [HL1092] (GTX636265) diluted at 1:10000.

Antigen Retrieval: Tris-EDTA buffer, pH 9.0, 15 min

Corresponding RNA levels (RPKM) in the tissues are based on NCBI database.

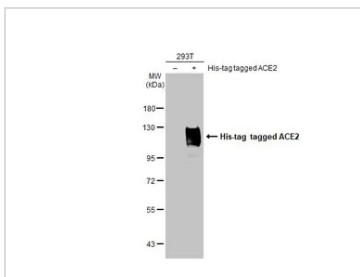
**GTX636265 IHC-P Image**

ACE2 antibody [HL1092] detects ACE2 protein by immunohistochemical analysis. Sample: Paraffin-embedded human tissues.

ACE2 stained by ACE2 antibody [HL1092] (GTX636265) diluted at 1:10000.

Antigen Retrieval: Tris-EDTA buffer, pH 9.0, 15 min

Corresponding RNA levels (nTPM) in the tissues are based on Human Protein Atlas program.

**GTX636265 WB Image**

Non-transfected (-) and transfected (+) 293T whole cell extracts (30  $\mu$ g) were separated by 7.5% SDS-PAGE, and the membrane was blotted with ACE2 antibody [HL1092] (GTX636265) diluted at 1:5000. The HRP-conjugated anti-rabbit IgG antibody (GTX213110-01) was used to detect the primary antibody.



For full product information, images and publications, please visit our [website](#).