

SDHA antibody [HL1117]

Cat. No. GTX636335

宿主	Rabbit
克隆	Monoclonal
同种型	IgG
实验应用	WB, ICC/IF, IHC-P, IHC-Wm
种属反应	Human, Mouse, Rat, Zebrafish, Drosophila

引用文献 (1)

实验应用

应用说明

*最佳稀释倍数与浓度应由研究人员确认

Suggested dilution	Recommended dilution
WB	1:500-1:3000
ICC/IF	Assay dependent
IHC-P	Assay dependent
IHC-Wm	Assay dependent

以下为常规应用缩写的中文注解

WB: 免疫印迹

ICC/IF: 细胞染色

IHC-P: 石蜡切片

IHC-Fr: 冰冻切片

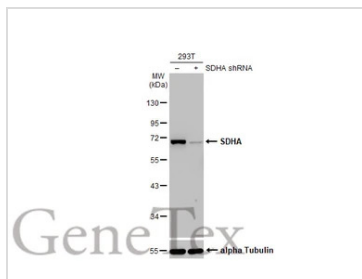
属性

形式	Liquid
存储溶液	PBS
保存剂	No preservatives
存放说明	Store as concentrated solution. Centrifuge briefly prior to opening vial. For short-term storage (1-2 weeks), store at 4°C. For long-term storage, aliquot and store at -20°C or below. Avoid multiple freeze-thaw cycles.
浓度	1 mg/ml (Please refer to the vial label for the specific concentration.)
偶联	Unconjugated
RRID	AB_2909973
注意事项	仅供实验室使用。不适用于人类或动物的任何临床, 治疗或诊断用途。不适合动物或人类食用。



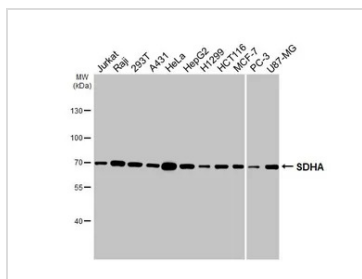
For full product information, images and publications, please visit our [website](#).

產品圖片



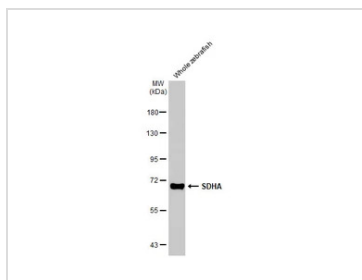
GTX636335 WB Image

Non-transfected (-) and transfected (+) 293T whole cell extracts (30 µg) were separated by 10% SDS-PAGE, and the membrane was blotted with SDHA antibody [HL1117] (GTX636335) diluted at 1:1000. The HRP-conjugated anti-rabbit IgG antibody (GTX213110-01) was used to detect the primary antibody.



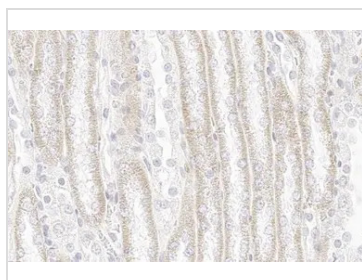
GTX636335 WB Image

Various whole cell extracts (30 µg) were separated by 7.5% SDS-PAGE, and the membrane was blotted with SDHA antibody [HL1117] (GTX636335) diluted at 1:1000. The HRP-conjugated anti-rabbit IgG antibody (GTX213110-01) was used to detect the primary antibody.



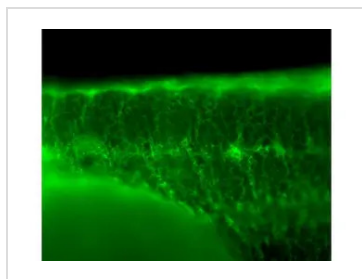
GTX636335 WB Image

Whole zebrafish extract (30 µg) was separated by 7.5% SDS-PAGE, and the membrane was blotted with SDHA antibody [HL1117] (GTX636335) diluted at 1:1000. The HRP-conjugated anti-rabbit IgG antibody (GTX213110-01) was used to detect the primary antibody.



GTX636335 IHC-P Image

SDHA antibody [HL1117] detects SDHA protein by immunohistochemical analysis.
 Sample: Paraffin-embedded rat kidney.
 SDHA stained by SDHA antibody [HL1117] (GTX636335) diluted at 1:100.
 Antigen Retrieval: Citrate buffer, pH 6.0, 15 min



GTX636335 IHC-Wm Image

SDHA antibody [HL1117] detects SDHA protein on whole mount zebrafish by immunohistochemical analysis.
 Sample: Paraformaldehyde-fixed 2 days-post-fertilization zebrafish embryo.
 Green: SDHA stained by SDHA antibody [HL1117] (GTX636335) diluted at 1:50.
 Antigen Retrieval: Citrate buffer, pH 6.0, 15 min



For full product information, images and publications, please visit our [website](#).