

Integrin beta 1 / CD29 antibody [HL1256]

Cat. No. GTX636658

| | |
|------|-----------------|
| 宿主 | Rabbit |
| 克隆 | Monoclonal |
| 同种型 | IgG |
| 实验应用 | WB, ICC/IF, IP |
| 种属反应 | Human, Cat, Dog |

★★★★★ 产品评论 (1)

实验应用

应用说明

*最佳稀释倍数与浓度应由研究人员确认

| Suggested dilution | Recommended dilution |
|--------------------|----------------------|
| WB | 1:5000-1:20000 |
| ICC/IF | Assay dependent |
| IP | Assay dependent |

以下为常规应用缩写的中文注解

WB: 免疫印迹

ICC/IF: 细胞染色

IHC-P: 石蜡切片

IHC-Fr: 冰冻切片

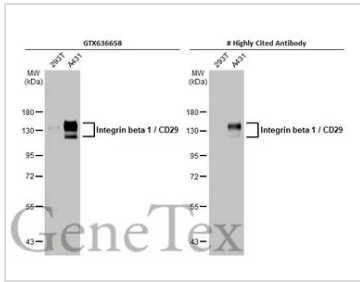
属性

| | |
|------|--|
| 形式 | Liquid |
| 存储溶液 | PBS |
| 保存剂 | No preservatives |
| 存放说明 | Store as concentrated solution. Centrifuge briefly prior to opening vial. For short-term storage (1-2 weeks), store at 4°C. For long-term storage, aliquot and store at -20°C or below. Avoid multiple freeze-thaw cycles. |
| 浓度 | 1 mg/ml (Please refer to the vial label for the specific concentration.) |
| 偶联 | Unconjugated |
| RRID | AB_2910032 |
| 注意事项 | 仅供实验室使用。不适用于人类或动物的任何临床, 治疗或诊断用途。不适合动物或人类食用。 |



For full product information, images and publications, please visit our [website](#).

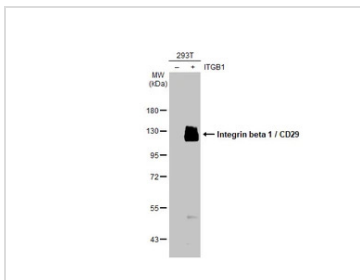
產品圖片



GTX636658 WB Image

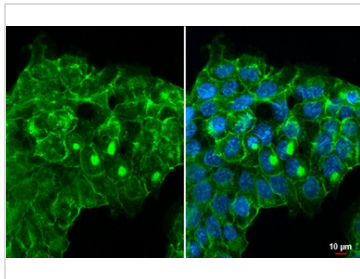
Various whole cell extracts (30 µg) were separated by 7.5% SDS-PAGE, and the membranes were blotted with Integrin beta 1 / CD29 antibody [HL1256] (GTX636658) diluted at 1:10000 and competitor's antibody (# Highly Cited Antibody) diluted at 1:10000. The HRP-conjugated anti-rabbit IgG antibody (GTX213110-01) was used to detect the primary antibody.

*The competitor is not affiliated with GeneTex and does not endorse this product.



GTX636658 WB Image

Non-transfected (-) and transfected (+) 293T whole cell extracts (100 µg) were separated by 7.5% SDS-PAGE, and the membrane was blotted with Integrin beta 1 / CD29 antibody [HL1256] (GTX636658) diluted at 1:50000. The HRP-conjugated anti-rabbit IgG antibody (GTX213110-01) was used to detect the primary antibody.



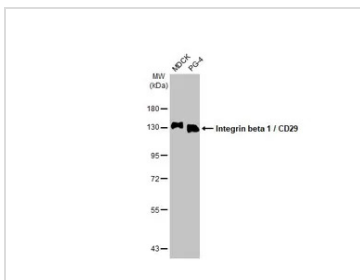
GTX636658 ICC/IF Image

Integrin beta 1 / CD29 antibody [HL1256] detects Integrin beta 1 / CD29 protein at cell membrane by immunofluorescent analysis.

Sample: A431 cells were fixed in ice-cold MeOH for 5 min.

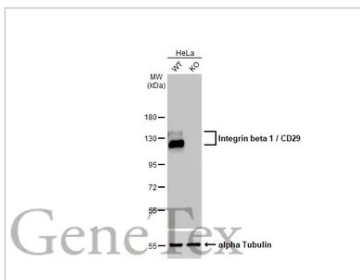
Green: Integrin beta 1 / CD29 stained by Integrin beta 1 / CD29 antibody [HL1256] (GTX636658) diluted at 1:1000.

Blue: Fluoroshield with DAPI (GTX30920).



GTX636658 WB Image

Various whole cell extracts (30 µg) were separated by 7.5% SDS-PAGE, and the membrane was blotted with Integrin beta 1 / CD29 antibody [HL1256] (GTX636658) diluted at 1:1000. The HRP-conjugated anti-rabbit IgG antibody (GTX213110-01) was used to detect the primary antibody.



GTX636658 WB Image

Wild-type (WT) and ITGB1 knockout (KO) HeLa cell extracts (30 µg) were separated by 7.5% SDS-PAGE, and the membrane was blotted with Integrin beta 1 / CD29 antibody [HL1256] (GTX636658) diluted at 1:20000. The HRP-conjugated anti-rabbit IgG antibody (GTX213110-01) was used to detect the primary antibody.



For full product information, images and publications, please visit our [website](#).