

Alkaline phosphatase (intestinal) antibody [HL1268]

Cat. No. GTX636670

宿主	Rabbit
克隆	Monoclonal
同种型	IgG
实验应用	WB, IHC-P
种属反应	Human, Mouse, Drosophila

实验应用

应用说明

*最佳稀释倍数与浓度应由研究人员确认

Suggested dilution	Recommended dilution
WB	1:500-1:3000
IHC-P	Assay dependent

以下为常规应用缩写的中文注解

WB: 免疫印迹

ICC/IF: 细胞染色

IHC-P: 石蜡切片

IHC-Fr: 冰冻切片

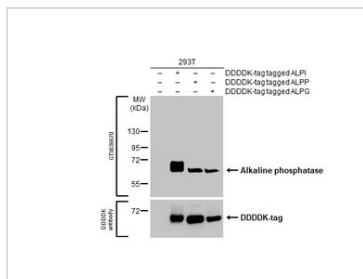
属性

形式	Liquid
存储溶液	PBS
保存剂	No preservatives
存放说明	Store as concentrated solution. Centrifuge briefly prior to opening vial. For short-term storage (1-2 weeks), store at 4°C. For long-term storage, aliquot and store at -20°C or below. Avoid multiple freeze-thaw cycles.
浓度	1 mg/ml (Please refer to the vial label for the specific concentration.)
偶联	Unconjugated
RRID	AB_2910038
注意事项	仅供实验室使用。不适用于人类或动物的任何临床, 治疗或诊断用途。不适合动物或人类食用。



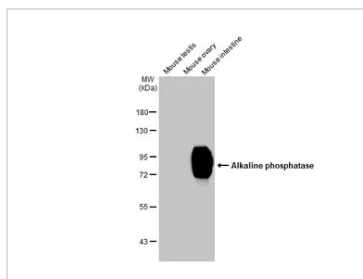
For full product information, images and publications, please visit our [website](#).

產品圖片



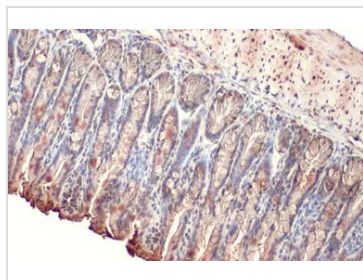
GTX636670 WB Image

Non-transfected (-) and transfected (+) 293T whole cell extracts (30 µg) were separated by 10% SDS-PAGE, and the membrane was blotted with Alkaline phosphatase (intestinal) antibody [HL1268] (GTX636670) diluted at 1:5000. The HRP-conjugated anti-rabbit IgG antibody (GTX213110-01) was used to detect the primary antibody.



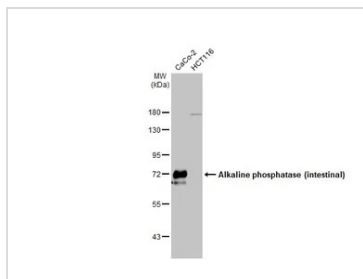
GTX636670 WB Image

Various tissue extracts (50 µg) were separated by 7.5% SDS-PAGE, and the membrane was blotted with Alkaline phosphatase (intestinal) antibody [HL1268] (GTX636670) diluted at 1:1000. The HRP-conjugated anti-rabbit IgG antibody (GTX213110-01) was used to detect the primary antibody.



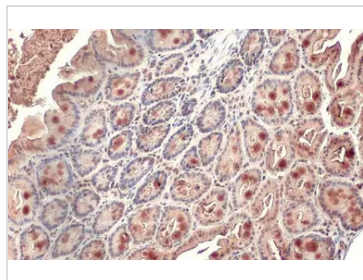
GTX636670 IHC-P Image

Alkaline phosphatase (intestinal) antibody [HL1268] detects secreted Alkaline phosphatase (intestinal) protein by immunohistochemical analysis.
 Sample: Paraffin-embedded mouse intestine.
 Alkaline phosphatase (intestinal) stained by Alkaline phosphatase (intestinal) antibody [HL1268] (GTX636670) diluted at 1:100.
 Antigen Retrieval: Citrate buffer, pH 6.0, 15 min



GTX636670 WB Image

Various whole cell extracts (30 µg) were separated by 7.5% SDS-PAGE, and the membrane was blotted with Alkaline phosphatase (intestinal) antibody [HL1268] (GTX636670) diluted at 1:1000. The HRP-conjugated anti-rabbit IgG antibody (GTX213110-01) was used to detect the primary antibody.



GTX636670 IHC-P Image

Alkaline phosphatase (intestinal) antibody [HL1268] detects secreted Alkaline phosphatase (intestinal) protein by immunohistochemical analysis.
 Sample: Paraffin-embedded mouse colon.
 Alkaline phosphatase (intestinal) stained by Alkaline phosphatase (intestinal) antibody [HL1268] (GTX636670) diluted at 1:100.
 Antigen Retrieval: Citrate buffer, pH 6.0, 15 min



For full product information, images and publications, please visit our [website](#).