

NFIX antibody [HL1269]

Cat. No. GTX636671

宿主	Rabbit
克隆	Monoclonal
同种型	IgG
实验应用	ICC/IF, IHC-P
种属反应	Mouse, Rat

实验应用

应用说明

*最佳稀释倍数与浓度应由研究人员确认

Suggested dilution	Recommended dilution
ICC/IF	Assay dependent
IHC-P	1:100-1:1000

以下为常规应用缩写的中文注解

WB: 免疫印迹

ICC/IF: 细胞染色

IHC-P: 石蜡切片

IHC-Fr: 冰冻切片

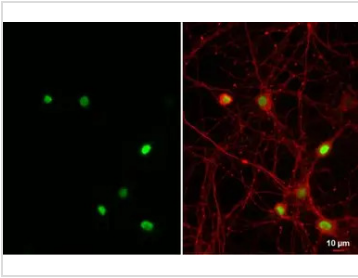
属性

形式	Liquid
存储溶液	PBS
保存剂	No preservatives
存放说明	Store as concentrated solution. Centrifuge briefly prior to opening vial. For short-term storage (1-2 weeks), store at 4°C. For long-term storage, aliquot and store at -20°C or below. Avoid multiple freeze-thaw cycles.
浓度	1 mg/ml (Please refer to the vial label for the specific concentration.)
偶联	Unconjugated
RRID	AB_2910039
注意事项	仅供实验室使用。不适用于人类或动物的任何临床, 治疗或诊断用途。不适合动物或人类食用。



For full product information, images and publications, please visit our [website](#).

產品圖片

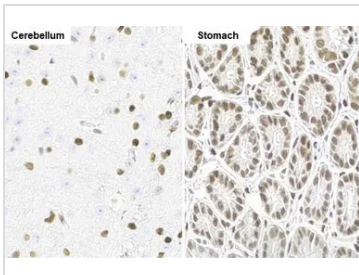
**GTX636671 ICC/IF Image**

NFIX antibody [HL1269] detects NFIX protein at nucleus by immunofluorescent analysis.

Sample: DIV10 rat E18 primary hippocampal neuron and glia cells were fixed in 4% paraformaldehyde at RT for 15 min.

Green: NFIX stained by NFIX antibody [HL1269] (GTX636671) diluted at 1:250.

Red: Tau, a cytoskeleton marker, stained by Tau antibody [GT287] (GTX634809) diluted at 1:500.

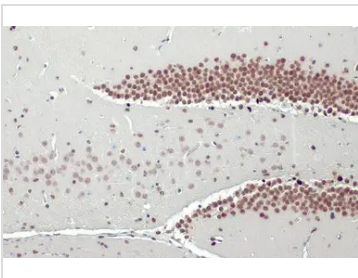
**GTX636671 IHC-P Image**

NFIX antibody [HL1269] detects NFIX protein by immunohistochemical analysis.

Sample: Paraffin-embedded mouse tissue.

NFIX stained by NFIX antibody [HL1269] (GTX636671) diluted at 1:100.

Antigen Retrieval: Citrate buffer, pH 6.0, 15 min

**GTX636671 IHC-P Image**

NFIX antibody [HL1269] detects NFIX protein at nucleus by immunohistochemical analysis.

Sample: Paraffin-embedded mouse brain.

NFIX stained by NFIX antibody [HL1269] (GTX636671) diluted at 1:100.

Antigen Retrieval: Citrate buffer, pH 6.0, 15 min

**GTX636671 IHC-P Image**

NFIX antibody [HL1269] detects NFIX protein by immunohistochemical analysis.

Sample: Paraffin-embedded mouse hippocampus.

NFIX stained by NFIX antibody [HL1269] (GTX636671) diluted at 1:800.

Antigen Retrieval: Citrate buffer, pH 6.0, 15 min

The observed subcellular location is based on the publication: PMID: 32166136.

**GTX636671 IHC-P Image**

NFIX antibody [HL1269] detects NFIX protein by immunohistochemical analysis.

Sample: Paraffin-embedded mouse hippocampus.

NFIX stained by NFIX antibody [HL1269] (GTX636671) diluted at 1:800.

Antigen Retrieval: Citrate buffer, pH 6.0, 15 min

The observed subcellular location is based on the publication: PMID: 32166136.



For full product information, images and publications, please visit our [website](#).