

PKC (pan) (zeta phospho Thr410) antibody [HL1278]

Cat. No. GTX636680

宿主	Rabbit
克隆	Monoclonal
同种型	IgG
实验应用	WB
种属反应	Human, Mouse, Rat, Drosophila

实验应用

应用说明

*最佳稀释倍数与浓度应由研究人员确认

Suggested dilution	Recommended dilution
WB	1:500-1:3000

以下为常规应用缩写的中文注解

WB: 免疫印迹

ICC/IF: 细胞染色

IHC-P: 石蜡切片

IHC-Fr: 冰冻切片

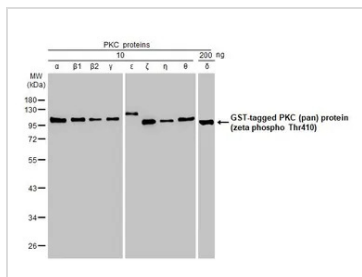
属性

形式	Liquid
存储溶液	PBS
保存剂	No preservatives
存放说明	Store as concentrated solution. Centrifuge briefly prior to opening vial. For short-term storage (1-2 weeks), store at 4°C. For long-term storage, aliquot and store at -20°C or below. Avoid multiple freeze-thaw cycles.
浓度	1 mg/ml (Please refer to the vial label for the specific concentration.)
偶联	Unconjugated
注意事项	仅供实验室使用。不适用于人类或动物的任何临床, 治疗或诊断用途。不适合动物或人类食用。

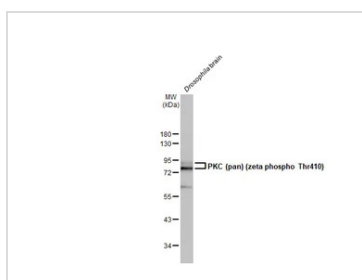


For full product information, images and publications, please visit our [website](#).

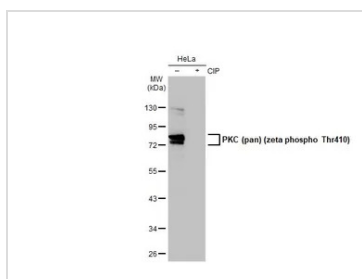
產品圖片

**GTX636680 WB Image**

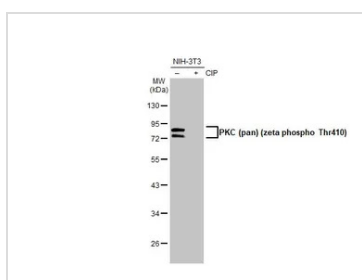
PKC proteins were separated by 10% SDS-PAGE, and the membrane was blotted with PKC (pan) (zeta phospho Thr410) antibody [HL1278] (GTX636680) diluted at 1:1000. The HRP-conjugated anti-rabbit IgG antibody (GTX213110-01) was used to detect the primary antibody.

**GTX636680 WB Image**

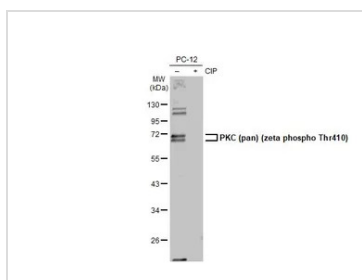
Drosophila tissue extract (50 μg) was separated by 10% SDS-PAGE, and the membrane was blotted with PKC (pan) (zeta phospho Thr410) antibody [HL1278] (GTX636680) diluted at 1:1000. The HRP-conjugated anti-rabbit IgG antibody (GTX213110-01) was used to detect the primary antibody.

**GTX636680 WB Image**

Untreated (-) and treated (+) HeLa whole cell extracts (30 μg) were separated by 10% SDS-PAGE, and the membrane was blotted with PKC (pan) (zeta phospho Thr410) antibody [HL1278] (GTX636680) diluted at 1:1000. The HRP-conjugated anti-rabbit IgG antibody (GTX213110-01) was used to detect the primary antibody.

**GTX636680 WB Image**

Untreated (-) and treated (+) NIH-3T3 whole cell extracts (30 μg) were separated by 10% SDS-PAGE, and the membrane was blotted with PKC (pan) (zeta phospho Thr410) antibody [HL1278] (GTX636680) diluted at 1:1000. The HRP-conjugated anti-rabbit IgG antibody (GTX213110-01) was used to detect the primary antibody.

**GTX636680 WB Image**

Untreated (-) and treated (+) PC-12 whole cell extracts (30 μg) were separated by 10% SDS-PAGE, and the membrane was blotted with PKC (pan) (zeta phospho Thr410) antibody [HL1278] (GTX636680) diluted at 1:1000. The HRP-conjugated anti-rabbit IgG antibody (GTX213110-01) was used to detect the primary antibody, and the signal was developed with Trident ECL plus-Enhanced.



For full product information, images and publications, please visit our [website](#).