

## SARS-CoV-2 (COVID-19) nsp12 antibody [HL1415]

**Cat. No. GTX636881**

宿主	Rabbit
克隆	Monoclonal
同种型	IgG
实验应用	WB, ICC/IF, IHC-P (cell pellet)
种属反应	SARS Coronavirus 2

## 实验应用

## 应用说明

\*最佳稀释倍数与浓度应由研究人员确认

Suggested dilution	Recommended dilution
WB	1:1000-1:10000
ICC/IF	Assay dependent
IHC-P (cell pellet)	Assay dependent

以下为常规应用缩写的中文注解

WB: 免疫印迹

ICC/IF: 细胞染色

IHC-P: 石蜡切片

IHC-Fr: 冰冻切片

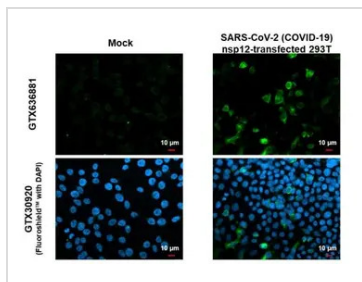
## 属性

形式	Liquid
存储溶液	PBS
保存剂	No preservatives
存放说明	Store as concentrated solution. Centrifuge briefly prior to opening vial. For short-term storage (1-2 weeks), store at 4°C. For long-term storage, aliquot and store at -20°C or below. Avoid multiple freeze-thaw cycles.
浓度	1 mg/ml (Please refer to the vial label for the specific concentration.)
偶联	Unconjugated
注意事项	仅供实验室使用。不适用于人类或动物的任何临床, 治疗或诊断用途。不适合动物或人类食用。



For full product information, images and publications, please visit our [website](#).

產品圖片



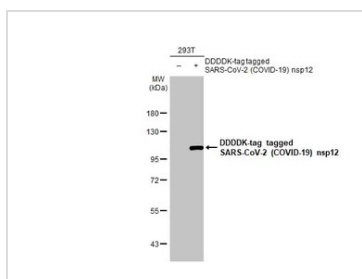
**GTX636881 ICC/IF Image**

SARS-CoV-2 (COVID-19) nsp12 antibody [HL1415] detects SARS-CoV-2 (COVID-19) nsp12 protein by immunofluorescent analysis.

Sample: Mock and transfected 293T cells were fixed in 4% paraformaldehyde at RT for 15 min.

Green: SARS-CoV-2 (COVID-19) nsp12 stained by SARS-CoV-2 (COVID-19) nsp12 antibody [HL1415] (GTX636881) diluted at 1:500.

Blue: Fluoroshield with DAPI (GTX30920).

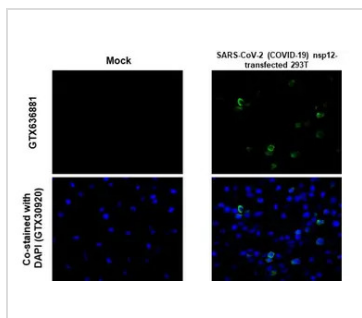


**GTX636881 WB Image**

Non-transfected (-) and transfected (+) 293T whole cell extracts (30 μg) were separated by 7.5% SDS-PAGE,

and the membrane was blotted with SARS-CoV-2 (COVID-19) nsp12 antibody [HL1415] (GTX636881)

diluted at 1:5000. The HRP-conjugated anti-rabbit IgG antibody (GTX213110-01) was used to detect the primary antibody.



**GTX636881 IHC-P (cell pellet) Image**

SARS-CoV-2 (COVID-19) nsp12 antibody [HL1415] detects SARS-CoV-2 (COVID-19) nsp12 protein by immunohistochemical analysis.

Sample: SARS-CoV-2 (COVID-19) nsp12 transfected 293T cell FFPE Cell Pellet Block.

Green: SARS-CoV-2 (COVID-19) nsp12 stained by SARS-CoV-2 (COVID-19) nsp12 antibody [HL1415] (GTX636881) diluted at 1:100.

Blue: Fluoroshield with DAPI (GTX30920).

Antigen Retrieval: Citrate buffer, pH 6.0, 15 min



For full product information, images and publications, please visit our [website](#).