

RGS4 antibody [HL1522]

Cat. No. GTX636996

宿主	Rabbit
克隆	Monoclonal
同种型	IgG
实验应用	WB, ICC/IF
种属反应	Human, Mouse, Rat

实验应用

应用说明

*最佳稀释倍数与浓度应由研究人员确认

Suggested dilution	Recommended dilution
WB	1:500-1:3000
ICC/IF	Assay dependent

以下为常规应用缩写的中文注解

WB: 免疫印迹

ICC/IF: 细胞染色

IHC-P: 石蜡切片

IHC-Fr: 冰冻切片

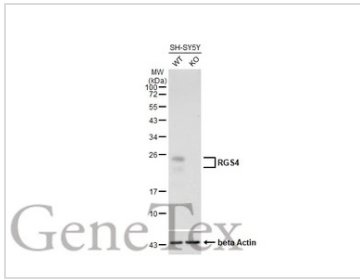
属性

形式	Liquid
存储溶液	PBS
保存剂	No preservatives
存放说明	Store as concentrated solution. Centrifuge briefly prior to opening vial. For short-term storage (1-2 weeks), store at 4°C. For long-term storage, aliquot and store at -20°C or below. Avoid multiple freeze-thaw cycles.
浓度	1 mg/ml (Please refer to the vial label for the specific concentration.)
偶联	Unconjugated
注意事项	仅供实验室使用。不适用于人类或动物的任何临床、治疗或诊断用途。不适合动物或人类食用。



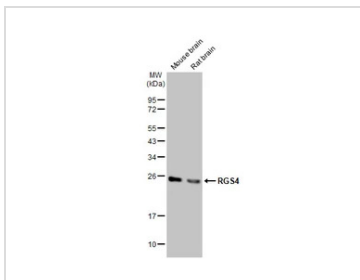
For full product information, images and publications, please visit our [website](#).

產品圖片



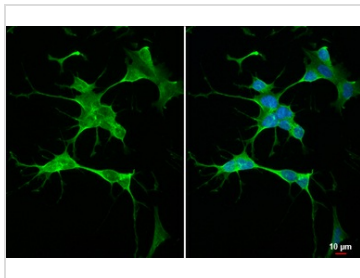
GTX636996 WB Image

Unboiled wild-type (WT) and RGS4 knockout (KO) SH-SY5Y cell extracts (15 µg) were separated by 12% SDS-PAGE, and the membrane was blotted with RGS4 antibody [HL1522] (GTX636996) diluted at 1:1000. The HRP-conjugated anti-rabbit IgG antibody (GTX213110-01) was used to detect the primary antibody.



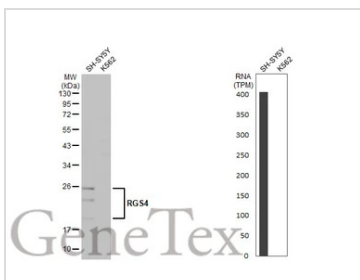
GTX636996 WB Image

Various tissue extracts (50 µg) were separated by 12% SDS-PAGE, and the membrane was blotted with RGS4 antibody [HL1522] (GTX636996) diluted at 1:1000. The HRP-conjugated anti-rabbit IgG antibody (GTX213110-01) was used to detect the primary antibody, and the signal was developed with Trident ECL plus-Enhanced.



GTX636996 ICC/IF Image

RGS4 antibody [HL1522] detects RGS4 protein at cytoplasm by immunofluorescent analysis. Sample: SH-SY-5Y cells were fixed in 4% paraformaldehyde at RT for 15 min. Green: RGS4 stained by RGS4 antibody [HL1522] (GTX636996) diluted at 1:500. Blue: Fluoroshield with DAPI (GTX30920).



GTX636996 WB Image

Various whole cell extracts (30 µg) were separated by 12% SDS-PAGE, and the membrane was blotted with RGS4 antibody [HL1522] (GTX636996) diluted at 1:200. The HRP-conjugated anti-rabbit IgG antibody (GTX213110-01) was used to detect the primary antibody. Corresponding RNA expression data for the same cell lines are based on Human Protein Atlas program.



For full product information, images and publications, please visit our [website](#).