

## Zika virus Envelope protein antibody [HL1699]

**Cat. No. GTX637298**

宿主	Rabbit
克隆	Monoclonal
同种型	IgG
实验应用	WB, ICC/IF, ELISA, Sandwich ELISA
种属反应	Zika virus

## 实验应用

## 应用说明

\*最佳稀释倍数与浓度应由研究人员确认

Suggested dilution	Recommended dilution
WB	1:500-1:3000
ICC/IF	Assay dependent
ELISA	Assay dependent
Sandwich ELISA	Assay dependent

**Note : Capture: GTX63729, Detection: GTX64518**

以下为常规应用缩写的中文注解

WB: 免疫印迹

ICC/IF: 细胞染色

IHC-P: 石蜡切片

IHC-Fr: 冰冻切片

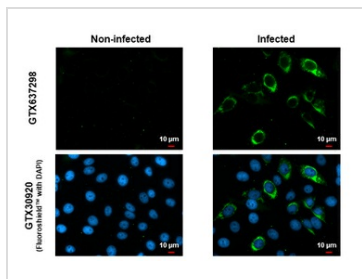
## 属性

形式	Liquid
存储溶液	PBS
保存剂	No preservatives
存放说明	Store as concentrated solution. Centrifuge briefly prior to opening vial. For short-term storage (1-2 weeks), store at 4°C. For long-term storage, aliquot and store at -20°C or below. Avoid multiple freeze-thaw cycles.
浓度	1 mg/ml (Please refer to the vial label for the specific concentration.)
偶联	Unconjugated
注意事项	仅供实验室使用。不适用于人类或动物的任何临床、治疗或诊断用途。不适合动物或人类食用。



For full product information, images and publications, please visit our [website](#).

產品圖片



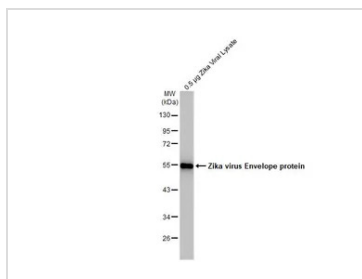
**GTX637298 ICC/IF Image**

Immunofluorescent analysis of mock and Zika virus-infected cells using Zika virus Envelope protein antibody [HL1699] (GTX637298).

Sample: Zika virus non-infected and infected cells slide.

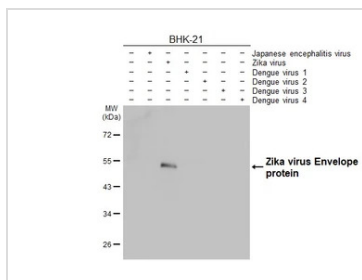
Green: Zika virus Envelope protein antibody [HL1699] (GTX637298) diluted at 1:100.

Blue: Fluoroshield with DAPI (GTX30920).



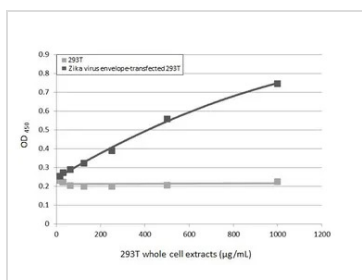
**GTX637298 WB Image**

Zika viral lysate (0.5 μg) was separated by 10% SDS-PAGE, and the membrane was blotted with Zika virus Envelope protein antibody [HL1699] (GTX637298) diluted at 1:2000. The HRP-conjugated anti-rabbit IgG antibody (GTX213110-01) was used to detect the primary antibody.



**GTX637298 WB Image**

Non-infected (-) and infected (+) BHK-21 whole cell extracts (5 μg) were separated by 10% SDS-PAGE, and the membrane was blotted with Zika virus Envelope protein antibody [HL1699] (GTX637298) diluted at 1:1000. The HRP-conjugated anti-rabbit IgG antibody (GTX213110-01) was used to detect the primary antibody.



**GTX637298 ELISA Image**

Sandwich ELISA detection of non-transfected and transfected 293T whole cell extracts using antibodies as below.

**Capture:** Zika virus Envelope protein antibody [HL1699] (GTX637298) (5 μg/mL)

**Detection:** Zika virus Envelope protein antibody [GT314] (GTX645189) (1 μg/mL)



For full product information, images and publications, please visit our [website](#).