

## Apolipoprotein A1 antibody [HL1713]

Cat. No. GTX637312

宿主	Rabbit
克隆	Monoclonal
同种型	IgG
实验应用	WB, ICC/IF, ELISA
种属反应	Human, Mouse, Rat

## 实验应用

## 应用说明

\*最佳稀释倍数与浓度应由研究人员确认

Suggested dilution	Recommended dilution
WB	1:1000-1:10000
ICC/IF	Assay dependent
ELISA	Assay dependent

以下为常规应用缩写的中文注解

WB: 免疫印迹

ICC/IF: 细胞染色

IHC-P: 石蜡切片

IHC-Fr: 冰冻切片

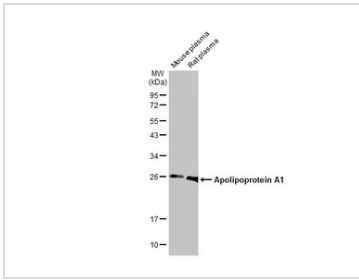
## 属性

形式	Liquid
存储溶液	PBS
保存剂	No preservatives
存放说明	Store as concentrated solution. Centrifuge briefly prior to opening vial. For short-term storage (1-2 weeks), store at 4°C. For long-term storage, aliquot and store at -20°C or below. Avoid multiple freeze-thaw cycles.
浓度	1 mg/ml (Please refer to the vial label for the specific concentration.)
偶联	Unconjugated
注意事项	仅供实验室使用。不适用于人类或动物的任何临床, 治疗或诊断用途。不适合动物或人类食用。



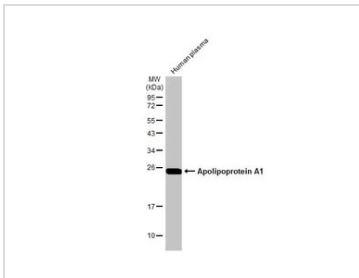
For full product information, images and publications, please visit our [website](#).

產品圖片



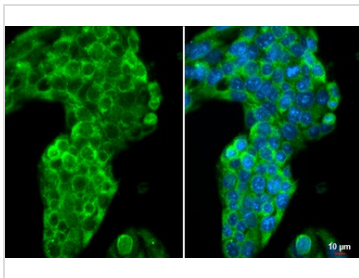
**GTX637312 WB Image**

Mouse plasma and Rat plasma (30 µg) were separated by 12% SDS-PAGE, and the membrane was blotted with Apolipoprotein A1 antibody [HL1713] (GTX637312) diluted at 1:10000. The HRP-conjugated anti-rabbit IgG antibody (GTX213110-01) was used to detect the primary antibody.



**GTX637312 WB Image**

Human plasma (30 µg) was separated by 12% SDS-PAGE, and the membrane was blotted with Apolipoprotein A1 antibody [HL1713] (GTX637312) diluted at 1:100000. The HRP-conjugated anti-rabbit IgG antibody (GTX213110-01) was used to detect the primary antibody.



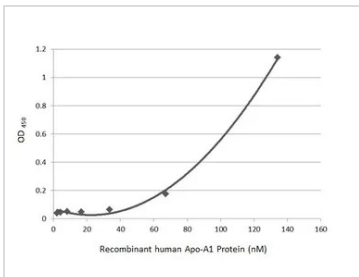
**GTX637312 ICC/IF Image**

Apolipoprotein A1 antibody [HL1713] detects Apolipoprotein A1 protein at cytoplasm by immunofluorescent analysis.

Sample: HepG2 cells were fixed in ice-cold MeOH for 5 min.

Green: Apolipoprotein A1 stained by Apolipoprotein A1 antibody [HL1713] (GTX637312) diluted at 1:500.

Blue: Fluoroshield with DAPI (GTX30920).



**GTX637312 ELISA Image**

Indirect ELISA analysis was performed by coating the plate with recombinant HEK293 expressed, full-length human Apo-A1 Protein, His Tag (134.23-2.1 nM). Coated protein was probed with Apolipoprotein A1 antibody [HL1713] (GTX637312) (1 µg/mL). Goat anti-rabbit IgG antibody (HRP) (GTX213110-01) (1:10000) was used to detect the bound primary antibody.



For full product information, images and publications, please visit our [website](#).