

## MUC2 antibody [HL1724]

Cat. No. GTX637372

宿主	Rabbit
克隆	Monoclonal
同种型	IgG
实验应用	WB, ICC/IF, IHC-P
种属反应	Human, Mouse, Rat

引用文献 (2)

★★★★☆ 产品评论 (1)

## 实验应用

## 应用说明

\*最佳稀释倍数与浓度应由研究人员确认

Suggested dilution	Recommended dilution
WB	1:1000-1:10000
ICC/IF	Assay dependent
IHC-P	1:100-1:1000

以下为常规应用缩写的中文注解

WB: 免疫印迹

ICC/IF: 细胞染色

IHC-P: 石蜡切片

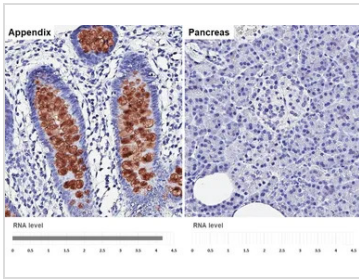
IHC-Fr: 冰冻切片

## 属性

形式	Liquid
存储溶液	PBS
保存剂	No preservatives
存放说明	Store as concentrated solution. Centrifuge briefly prior to opening vial. For short-term storage (1-2 weeks), store at 4°C. For long-term storage, aliquot and store at -20°C or below. Avoid multiple freeze-thaw cycles.
浓度	1 mg/ml (Please refer to the vial label for the specific concentration.)
偶联	Unconjugated
注意事项	仅供实验室使用。不适用于人类或动物的任何临床, 治疗或诊断用途。不适合动物或人类食用。

For full product information, images and publications, please visit our [website](#).

## 產品圖片

**GTX637372 IHC-P Image**

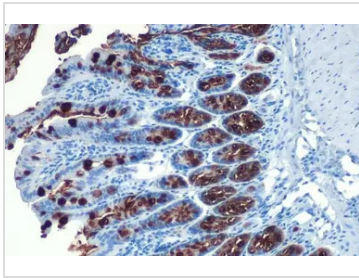
MUC2 antibody [HL1724] detects MUC2 protein by immunohistochemical analysis.

Sample: Paraffin-embedded human tissues.

MUC2 stained by MUC2 antibody [HL1724] (GTX637372) diluted at 1:4000.

Antigen Retrieval: Citrate buffer, pH 6.0, 15 min

Corresponding RNA levels (RPKM) in the tissues are based on NCBI database.

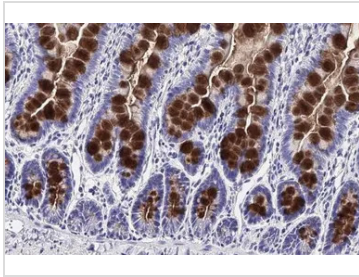
**GTX637372 IHC-P Image**

MUC2 antibody [HL1724] detects MUC2 protein at nucleus by immunohistochemical analysis.

Sample: Paraffin-embedded mouse intestine.

MUC2 stained by MUC2 antibody [HL1724] (GTX637372) diluted at 1:100.

Antigen Retrieval: Citrate buffer, pH 6.0, 15 min

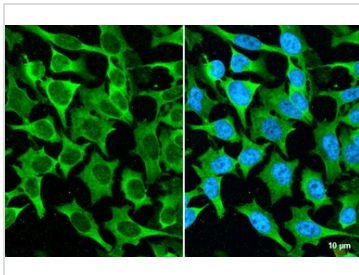
**GTX637372 IHC-P Image**

MUC2 antibody [HL1724] detects secreted MUC2 protein by immunohistochemical analysis.

Sample: Paraffin-embedded rat colon.

MUC2 stained by MUC2 antibody [HL1724] (GTX637372) diluted at 1:100.

Antigen Retrieval: Citrate buffer, pH 6.0, 15 min

**GTX637372 ICC/IF Image**

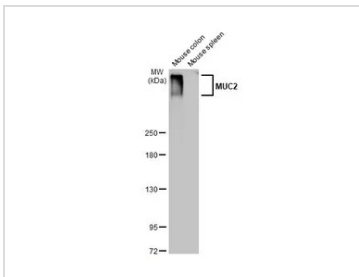
MUC2 antibody [HL1724] detects MUC2 protein by immunofluorescent analysis.

Sample: HeLa cells were fixed in 4% paraformaldehyde at RT for 15 min.

Green: MUC2 stained by MUC2 antibody [HL1724] (GTX637372) diluted at 1:500.

Blue: Fluoroshield with DAPI (GTX30920).

Scale bar= 10µm.

**GTX637372 WB Image**

Various tissue extracts (50 µg) were separated by 5% SDS-PAGE, and the membrane was blotted with MUC2 antibody [HL1724] (GTX637372) diluted at 1:5000. The HRP-conjugated anti-rabbit IgG antibody (GTX213110-01) was used to detect the primary antibody.



For full product information, images and publications, please visit our [website](#).