

## Human Papillomavirus type 16 E7 antibody [HL1821]

Cat. No. GTX637546

宿主	Rabbit
克隆	Monoclonal
同种型	IgG
实验应用	WB, ELISA, Lateral Flow, Sandwich ELISA
种属反应	Human papillomavirus type 16

引用文献 (1)

## 实验应用

## 应用说明

\*最佳稀释倍数与浓度应由研究人员确认

Suggested dilution	Recommended dilution
WB	Assay dependent
ELISA	Assay dependent
Lateral Flow	Assay dependent
Sandwich ELISA	Assay dependent

**Note : Capture: GTX637228, Detection: GTX637546****Capture : GTX637546 / GTX637228, Detection : GTX637228 / GTX637546. Please notice that GTX637228 / GTX637546 needs to be conjugated to HRP to function as the detection antibody when paired with GTX637546 / GTX637228. Please contact us for custom HRP-conjugated antibody.**

以下为常规应用缩写的中文注解

WB: 免疫印迹

ICC/IF: 细胞染色

IHC-P: 石蜡切片

IHC-Fr: 冰冻切片

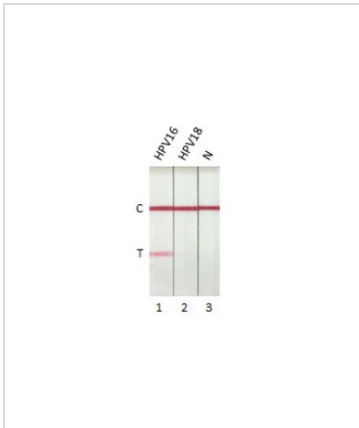
## 属性

形式	Liquid
存储溶液	PBS
保存剂	No preservatives
存放说明	Store as concentrated solution. Centrifuge briefly prior to opening vial. For short-term storage (1-2 weeks), store at 4°C. For long-term storage, aliquot and store at -20°C or below. Avoid multiple freeze-thaw cycles.
浓度	2 mg/ml (Please refer to the vial label for the specific concentration.)
偶联	Unconjugated
注意事项	仅供实验室使用。不适用于人类或动物的任何临床、治疗或诊断用途。不适合动物或人类食用。

For full product information, images and publications, please visit our [website](#).

Date 2026 / 04 / 04 Page 1 of 2

產品圖片



**GTX637546 Lateral Flow Image**

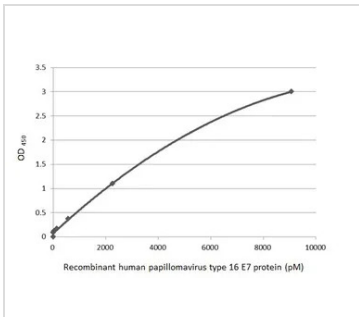
Detection of Human Papillomavirus type 16 E7 protein by lateral flow assay using the monoclonal antibody pair.

**Capture:** Human Papillomavirus type 16 E7 antibody (GTX637228 [HL1647])

**Detection:** Human Papillomavirus type 16 E7 antibody (GTX637546 [HL1821])

**Samples (10 ng) :**

1. HPV16 E7 protein (GTX133411-pro)
2. HPV18 E7 protein (GTX133412-pro)
3. Lysis buffer



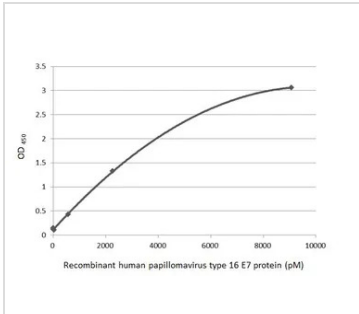
**GTX637546 ELISA Image**

Sandwich ELISA detection of recombinant Human Papillomavirus type 16 E7 protein, His tag (GTX133411-pro) using antibodies as below.

**Capture:** Human Papillomavirus type 16 E7 antibody [HL1647] (GTX637228) (5 µg/mL)

**Detection:** HRP-conjugated Human Papillomavirus type 16 E7 antibody [HL1821] (GTX637546) (1 µg/mL)

Please notice that GTX637546 needs to be conjugated to HRP to function as the detection antibody when paired with GTX637228. Please contact us for custom HRP-conjugated antibody.



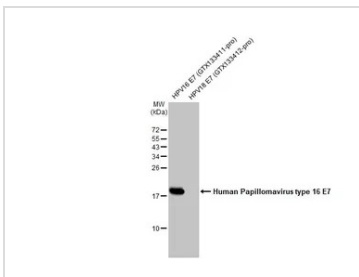
**GTX637546 ELISA Image**

Sandwich ELISA detection of recombinant Human Papillomavirus type 16 E7 protein, His tag (GTX133411-pro) using antibodies as below.

**Capture:** Human Papillomavirus type 16 E7 antibody [HL1821] (GTX637546) (5 µg/mL)

**Detection:** HRP-conjugated Human Papillomavirus type 16 E7 antibody [HL1647] (GTX637228) (1 µg/mL)

Please notice that GTX637228 needs to be conjugated to HRP to function as the detection antibody when paired with GTX637546. Please contact us for custom HRP-conjugated antibody.



**GTX637546 WB Image**

Human papillomavirus protein (100 ng) were separated by 15% SDS-PAGE, and the membrane was blotted with Human Papillomavirus type 16 E7 antibody [HL1821] (GTX637546) diluted at 1:1000. The HRP-conjugated anti-rabbit IgG antibody (GTX213110-01) was used to detect the primary antibody.



For full product information, images and publications, please visit our [website](#).