

Equine Encephalitis Virus nsP2 antibody [HL1920]

Cat. No. GTX637669

宿主	Rabbit
克隆	Monoclonal
同种型	IgG
实验应用	WB, ICC/IF, IHC-P (cell pellet)
种属反应	Venezuelan equine encephalitis virus, Eastern equine encephalitis virus, Western equine encephalitis virus

实验应用

应用说明

*最佳稀释倍数与浓度应由研究人员确认

Suggested dilution	Recommended dilution
WB	1:1000-1:10000
ICC/IF	1:100-1:1000
IHC-P (cell pellet)	Assay dependent

以下为常规应用缩写的中文注解

WB: 免疫印迹

ICC/IF: 细胞染色

IHC-P: 石蜡切片

IHC-Fr: 冰冻切片

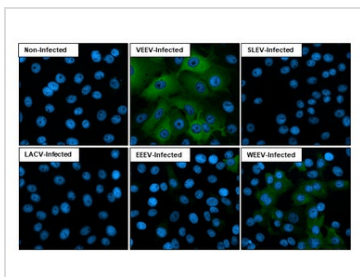
属性

形式	Liquid
存储溶液	PBS
保存剂	No preservatives
存放说明	Store as concentrated solution. Centrifuge briefly prior to opening vial. For short-term storage (1-2 weeks), store at 4°C. For long-term storage, aliquot and store at -20°C or below. Avoid multiple freeze-thaw cycles.
浓度	1 mg/ml (Please refer to the vial label for the specific concentration.)
偶联	Unconjugated
注意事项	仅供实验室使用。不适用于人类或动物的任何临床、治疗或诊断用途。不适合动物或人类食用。



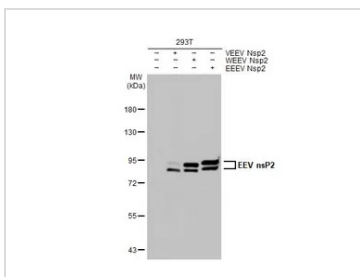
For full product information, images and publications, please visit our [website](#).

產品圖片



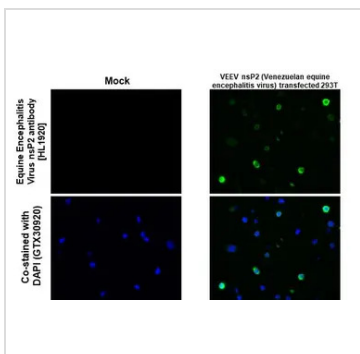
GTX637669 ICC/IF Image

Immunofluorescent analysis of various equine encephalitis virus infected cells using Equine Encephalitis Virus nsP2 antibody [HL1920] antibody (GTX637669). Sample: Multiple virus infected cells slide.
Green: Equine Encephalitis Virus nsP2 antibody [HL1920] antibody (GTX637669) diluted at 1:100.
Blue: Fluoroshield with DAPI (GTX30920).



GTX637669 WB Image

Non-transfected (-) and transfected (+) 293T whole cell extracts (30 µg) were separated by 7.5% SDS-PAGE, and the membrane was blotted with Equine Encephalitis Virus nsP2 antibody [HL1920] (GTX637669) diluted at 1:5000. The HRP-conjugated anti-rabbit IgG antibody (GTX213110-01) was used to detect the primary antibody, and the signal was developed with Trident ECL plus-Enhanced.



GTX637669 IHC-P (cell pellet) Image

Equine Encephalitis Virus nsP2 antibody [HL1920] detects Equine Encephalitis Virus nsP2 protein by immunohistochemical analysis.
Sample: Paraffin-embedded mock and VEEV nsP2 (Venezuelan equine encephalitis virus) - transfected 293T cell pellet.
Green: Equine Encephalitis Virus nsP2 stained by Equine Encephalitis Virus nsP2 antibody [HL1920] (GTX637669) diluted at 1:5000.
Blue: Fluoroshield with DAPI (GTX30920).
Antigen Retrieval: Citrate buffer, pH 6.0, 15 min



For full product information, images and publications, please visit our [website](#).