

DLX2 antibody [HL1942]

Cat. No. GTX637779

| | |
|------|------------|
| 宿主 | Rabbit |
| 克隆 | Monoclonal |
| 同种型 | IgG |
| 实验应用 | WB, ICC/IF |
| 种属反应 | Human, Rat |

实验应用

应用说明

*最佳稀释倍数与浓度应由研究人员确认

| Suggested dilution | Recommended dilution |
|--------------------|----------------------|
| WB | 1:500-1:3000 |
| ICC/IF | Assay dependent |

以下为常规应用缩写的中文注解

WB: 免疫印迹

ICC/IF: 细胞染色

IHC-P: 石蜡切片

IHC-Fr: 冰冻切片

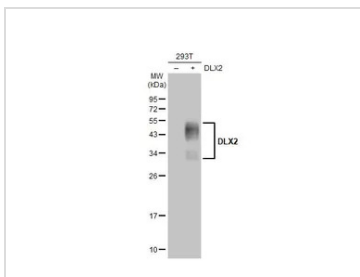
属性

| | |
|------|----------------------------------------------------------------------------------------------------------------------------------------------------------------------------------------------------------------------------|
| 形式 | Liquid |
| 存储溶液 | PBS |
| 保存剂 | No preservatives |
| 存放说明 | Store as concentrated solution. Centrifuge briefly prior to opening vial. For short-term storage (1-2 weeks), store at 4°C. For long-term storage, aliquot and store at -20°C or below. Avoid multiple freeze-thaw cycles. |
| 浓度 | 1 mg/ml (Please refer to the vial label for the specific concentration.) |
| 偶联 | Unconjugated |
| 注意事项 | 仅供实验室使用。不适用于人类或动物的任何临床，治疗或诊断用途。不适合动物或人类食用。 |

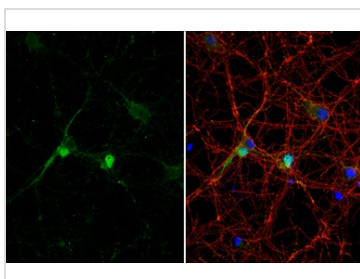


For full product information, images and publications, please visit our [website](#).

產品图片

**GTX637779 WB Image**

Non-transfected (-) and transfected (+) 293T whole cell extracts (30 μ g) were separated by 12% SDS-PAGE, and the membrane was blotted with DLX2 antibody [HL1942] (GTX637779) diluted at 1:5000. The HRP-conjugated anti-rabbit IgG antibody (GTX213110-01) was used to detect the primary antibody.

**GTX637779 ICC/IF Image**

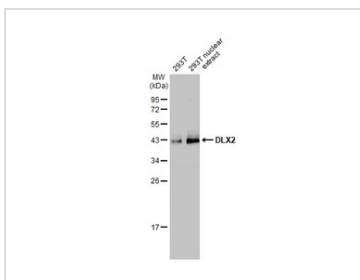
DLX2 antibody [HL1942] detects DLX2 protein at nucleus by immunofluorescent analysis.

Sample: DIV9 rat E18 primary cortical neuron and glia cells were fixed in 4% paraformaldehyde at RT for 15 min.

Green: DLX2 stained by DLX2 antibody [HL1942] (GTX637779) diluted at 1:250.

Red: Tau, an axon marker, stained by Tau antibody [GT287] (GTX634809) diluted at 1:500.

Blue: Fluoroshield with DAPI (GTX30920).

**GTX637779 WB Image**

293T whole cell and nuclear extracts (30 μ g) were separated by 12% SDS-PAGE, and the membrane was blotted with DLX2 antibody [HL1942] (GTX637779) diluted at 1:1000. The HRP-conjugated anti-rabbit IgG antibody (GTX213110-01) was used to detect the primary antibody. (WCE: whole cell extract; NE: nuclear extract)



For full product information, images and publications, please visit our [website](#).