

Zika virus NS2B protein antibody [HL2151]

Cat. No. GTX638129

宿主	Rabbit
克隆	Monoclonal
同种型	IgG
实验应用	WB, ICC/IF
种属反应	Zika virus

实验应用

应用说明

*最佳稀释倍数与浓度应由研究人员确认

Suggested dilution	Recommended dilution
WB	1:1000-1:10000
ICC/IF	Assay dependent

以下为常规应用缩写的中文注解

WB: 免疫印迹

ICC/IF: 细胞染色

IHC-P: 石蜡切片

IHC-Fr: 冰冻切片

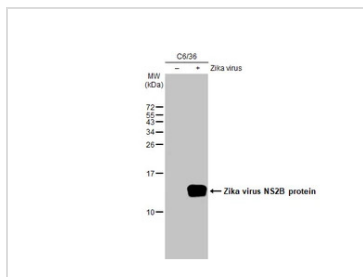
属性

形式	Liquid
存储溶液	PBS
保存剂	No preservatives
存放说明	Store as concentrated solution. Centrifuge briefly prior to opening vial. For short-term storage (1-2 weeks), store at 4°C. For long-term storage, aliquot and store at -20°C or below. Avoid multiple freeze-thaw cycles.
浓度	1 mg/ml (Please refer to the vial label for the specific concentration.)
偶联	Unconjugated
注意事项	仅供实验室使用。不适用于人类或动物的任何临床、治疗或诊断用途。不适合动物或人类食用。



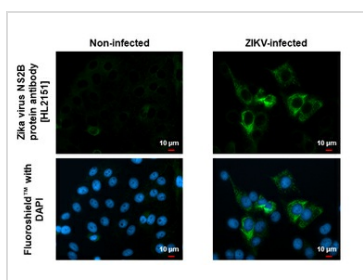
For full product information, images and publications, please visit our [website](#).

產品圖片



GTX638129 WB Image

Non-infected (-) and infected (+) C6/36 whole cell extracts (30 µg) were separated by 15% SDS-PAGE, and the membrane was blotted with Zika virus NS2B protein antibody [HL2151] (GTX638129) diluted at 1:5000. The HRP-conjugated anti-rabbit IgG antibody (GTX213110-01) was used to detect the primary antibody.



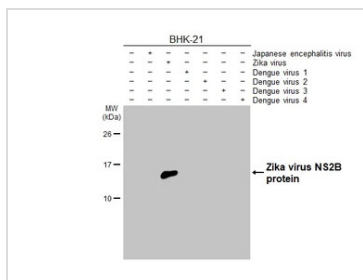
GTX638129 ICC/IF Image

Immunofluorescent analysis of Zika virus infected cells using Zika virus NS2B protein antibody [HL2151] antibody (GTX638129).

Sample: Zika virus infected cells slide.

Green: Zika virus NS2B protein antibody [HL2151] antibody (GTX638129) diluted at 1:100.

Blue: Fluoroshield with DAPI (GTX30920).



GTX638129 WB Image

Non-infected (-) and infected (+) BHK-21 whole cell extracts (5 µg) were separated by 15% SDS-PAGE, and the membrane was blotted with Zika virus NS2B protein antibody [HL2151] (GTX638129) diluted at 1:1000. The HRP-conjugated anti-rabbit IgG antibody (GTX213110-01) was used to detect the primary antibody.



For full product information, images and publications, please visit our [website](#).