

BCA1 antibody [HL2172]

Cat. No. GTX638176

宿主	Rabbit
克隆	Monoclonal
同种型	IgG
实验应用	WB, IHC-P
种属反应	Human

实验应用

应用说明

*最佳稀释倍数与浓度应由研究人员确认

Suggested dilution	Recommended dilution
WB	1:500-1:3000
IHC-P	Assay dependent

以下为常规应用缩写的中文注解

WB: 免疫印迹

ICC/IF: 细胞染色

IHC-P: 石蜡切片

IHC-Fr: 冰冻切片

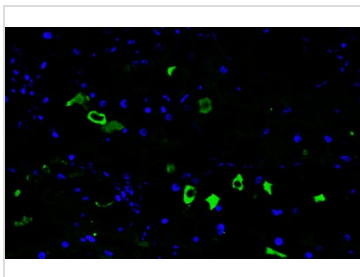
属性

形式	Liquid
存储溶液	PBS
保存剂	No preservatives
存放说明	Store as concentrated solution. Centrifuge briefly prior to opening vial. For short-term storage (1-2 weeks), store at 4°C. For long-term storage, aliquot and store at -20°C or below. Avoid multiple freeze-thaw cycles.
浓度	2 mg/ml (Please refer to the vial label for the specific concentration.)
偶联	Unconjugated
注意事项	仅供实验室使用。不适用于人类或动物的任何临床、治疗或诊断用途。不适合动物或人类食用。



For full product information, images and publications, please visit our [website](#).

產品圖片

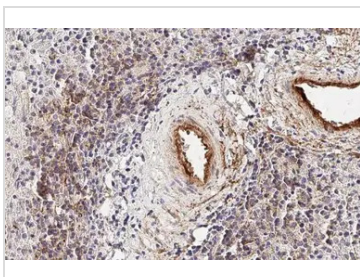
**GTX638176 IHC-P Image**

BCA1 antibody [HL2172] detects BCA1 protein by immunohistochemical analysis.

Sample: Paraffin-embedded human Clear Cell Renal Cell Carcinoma (ccRCC).

BCA1 stained by BCA1 antibody [HL2172] (GTX638176) diluted at 1:100.

Antigen Retrieval: Tris-EDTA buffer, pH 8.0, 15 min

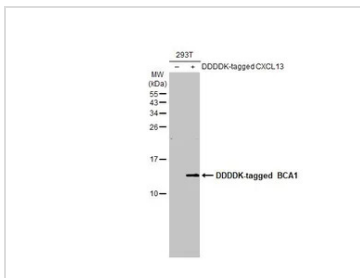
**GTX638176 IHC-P Image**

BCA1 antibody [HL2172] detects secreted BCA1 protein by immunohistochemical analysis.

Sample: Paraffin-embedded human spleen.

BCA1 stained by BCA1 antibody [HL2172] (GTX638176) diluted at 1:100.

Antigen Retrieval: Citrate buffer, pH 6.0, 15 min

**GTX638176 WB Image**

Non-transfected (-) and transfected (+) 293T whole cell extracts (30 μ g) were separated by 15% SDS-PAGE, and the membrane was blotted with BCA1 antibody [HL2172] (GTX638176) diluted at 1:5000. The HRP-conjugated anti-rabbit IgG antibody (GTX213110-01) was used to detect the primary antibody.



For full product information, images and publications, please visit our [website](#).