

## KLF5 antibody [HL2269]

Cat. No. GTX638321

|      |                   |
|------|-------------------|
| 宿主   | Rabbit            |
| 克隆   | Monoclonal        |
| 同种型  | IgG               |
| 实验应用 | WB, IHC-P         |
| 种属反应 | Human, Mouse, Rat |

## 实验应用

## 应用说明

\*最佳稀释倍数与浓度应由研究人员确认

| Suggested dilution | Recommended dilution |
|--------------------|----------------------|
| WB                 | 1:500-1:3000         |
| IHC-P              | Assay dependent      |

以下为常规应用缩写的中文注解

WB: 免疫印迹

ICC/IF: 细胞染色

IHC-P: 石蜡切片

IHC-Fr: 冰冻切片

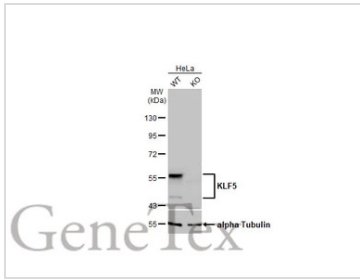
## 属性

|      |  |
|------|--|
| 形式   | Liquid   |
| 存储溶液 | PBS  |
| 保存剂  | No preservatives   |
| 存放说明 | Store as concentrated solution. Centrifuge briefly prior to opening vial. For short-term storage (1-2 weeks), store at 4°C. For long-term storage, aliquot and store at -20°C or below. Avoid multiple freeze-thaw cycles. |
| 浓度   | 1 mg/ml (Please refer to the vial label for the specific concentration.)   |
| 偶联   | Unconjugated   |
| 注意事项 | 仅供实验室使用。不适用于人类或动物的任何临床、治疗或诊断用途。不适合动物或人类食用。   |



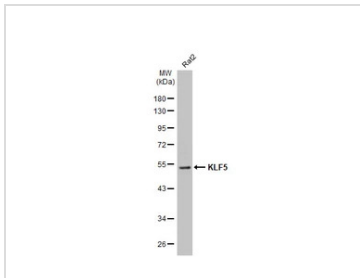
For full product information, images and publications, please visit our [website](#).

產品圖片



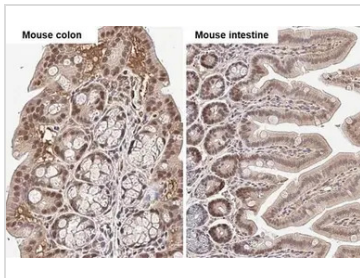
**GTX638321 WB Image**

Wild-type (WT) and KLF5 knockout (KO) HeLa cell extracts (30 µg) were separated by 10% SDS-PAGE, and the membrane was blotted with KLF5 antibody [HL2269] (GTX638321) diluted at 1:1000. The HRP-conjugated anti-rabbit IgG antibody (GTX213110-01) was used to detect the primary antibody.



**GTX638321 WB Image**

Whole cell extract (50 µg) was separated by 10% SDS-PAGE, and the membrane was blotted with KLF5 antibody [HL2269] (GTX638321) diluted at 1:1000. The HRP-conjugated anti-rabbit IgG antibody (GTX213110-01) was used to detect the primary antibody.



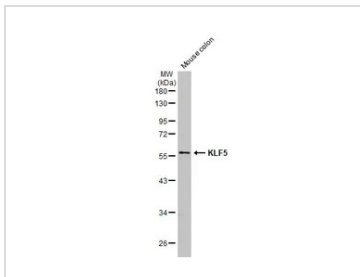
**GTX638321 IHC-P Image**

KLF5 antibody [HL2269] detects KLF5 protein by immunohistochemical analysis.

Sample: Paraffin-embedded mouse tissues.

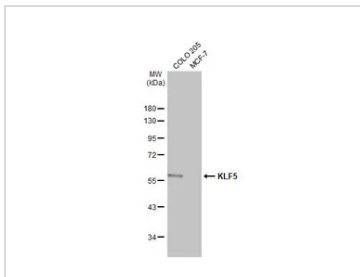
KLF5 stained by KLF5 antibody [HL2269] (GTX638321) diluted at 1:100.

Antigen Retrieval: Citrate buffer, pH 6.0, 15 min



**GTX638321 WB Image**

Mouse tissue extract (50 µg) was separated by 10% SDS-PAGE, and the membrane was blotted with KLF5 antibody [HL2269] (GTX638321) diluted at 1:1000. The HRP-conjugated anti-rabbit IgG antibody (GTX213110-01) was used to detect the primary antibody, and the signal was developed with Trident ECL plus-Enhanced.



**GTX638321 WB Image**

Various whole cell extracts (30 µg) were separated by 10% SDS-PAGE, and the membrane was blotted with KLF5 antibody [HL2269] (GTX638321) diluted at 1:1000. The HRP-conjugated anti-rabbit IgG antibody (GTX213110-01) was used to detect the primary antibody.



For full product information, images and publications, please visit our [website](#).