

PRG2 antibody [HL2547]

Cat. No. GTX638919

宿主	Rabbit
克隆	Monoclonal
同种型	IgG
实验应用	WB, ICC/IF, IHC-P
种属反应	Human, Mouse

实验应用

应用说明

*最佳稀释倍数与浓度应由研究人员确认

Suggested dilution	Recommended dilution
WB	1:1000-1:10000
ICC/IF	Assay dependent
IHC-P	Assay dependent

以下为常规应用缩写的中文注解

WB: 免疫印迹

ICC/IF: 细胞染色

IHC-P: 石蜡切片

IHC-Fr: 冰冻切片

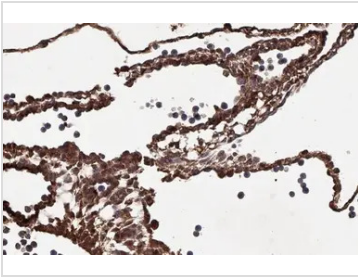
属性

形式	Liquid
存储溶液	PBS
保存剂	No preservatives
存放说明	Store as concentrated solution. Centrifuge briefly prior to opening vial. For short-term storage (1-2 weeks), store at 4°C. For long-term storage, aliquot and store at -20°C or below. Avoid multiple freeze-thaw cycles.
浓度	1 mg/ml (Please refer to the vial label for the specific concentration.)
偶联	Unconjugated
注意事项	仅供实验室使用。不适用于人类或动物的任何临床, 治疗或诊断用途。不适合动物或人类食用。



For full product information, images and publications, please visit our [website](#).

產品圖片

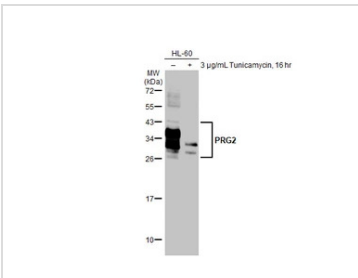
**GTX638919 IHC-P Image**

PRG2 antibody [HL2547] detects secreted PRG2 protein by immunohistochemical analysis.

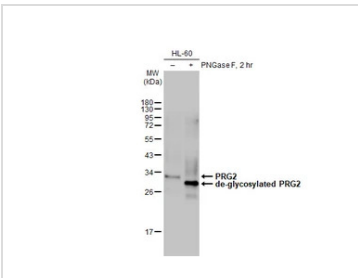
Sample: Paraffin-embedded mouse placenta.

PRG2 stained by PRG2 antibody [HL2547] (GTX638919) diluted at 1:100.

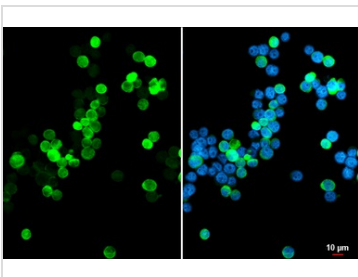
Antigen Retrieval: Citrate buffer, pH 6.0, 15 min

**GTX638919 WB Image**

Untreated (-) and treated (+) HL-60 whole cell extract (30 µg) were separated by 12% SDS-PAGE, and the membrane was blotted with PRG2 antibody [HL2547] (GTX638919) diluted at 1:1000. The HRP-conjugated anti-rabbit IgG antibody (GTX213110-01) was used to detect the primary antibody.

**GTX638919 WB Image**

Untreated (-) and treated (+) HL-60 whole cell extracts (30 µg) were separated by 12% SDS-PAGE, and the membrane was blotted with PRG2 antibody [HL2547] (GTX638919) diluted at 1:1000. The HRP-conjugated anti-rabbit IgG antibody (GTX213110-01) was used to detect the primary antibody.

**GTX638919 ICC/IF Image**

PRG2 antibody [HL2547] detects PRG2 protein by immunofluorescent analysis.

Sample: HL-60 cells were fixed in ice-cold MeOH for 5 min.

Green: PRG2 stained by PRG2 antibody [HL2547] (GTX638919) diluted at 1:500.

Blue: Fluoroshield with DAPI (GTX30920).



For full product information, images and publications, please visit our [website](#).