

## HLA-B7 antibody [BB7.1]

Cat. No. GTX639674

宿主	Mouse
克隆	Monoclonal
同种型	IgG1
实验应用	FCM
种属反应	Human

## 实验应用

## 应用说明

\*最佳稀释倍数与浓度应由研究人员确认

Suggested dilution	Recommended dilution
FCM	1:50-1:200

**Note : Do not need a permeabilization step.**

以下为常规应用缩写的中文注解

WB: 免疫印迹

ICC/IF: 细胞染色

IHC-P: 石蜡切片

IHC-Fr: 冰冻切片

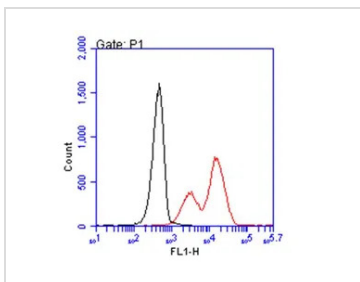
## 属性

形式	Liquid
存储溶液	PBS
保存剂	No preservatives
存放说明	Store as concentrated solution. Centrifuge briefly prior to opening vial. For short-term storage (1-2 weeks), store at 4°C. For long-term storage, aliquot and store at -20°C or below. Avoid multiple freeze-thaw cycles.
浓度	1 mg/ml (Please refer to the vial label for the specific concentration.)
偶联	Unconjugated
注意事项	仅供实验室使用。不适用于人类或动物的任何临床，治疗或诊断用途。不适合动物或人类食用。



For full product information, images and publications, please visit our [website](#).

## 產品圖片

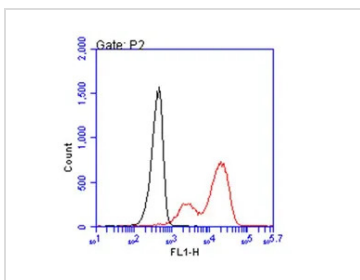
**GTX639674 FCM Image**

HLA-B7 antibody [BB7.1] (GTX639674) detects HLA-B7 protein by flow cytometry analysis. Sample: non-fixed and non-permeabilized PBMC; gated on granulocytes.

Black: Unlabelled sample was used as a control.

Red: HLA-B7 antibody [BB7.1] (GTX639674) dilution: 1:50.

Acquisition of 20,000 events were collected using a Alexa Flour 488-conjugated secondary antibody for FACS analysis.

**GTX639674 FCM Image**

HLA-B7 antibody [BB7.1] (GTX639674) detects HLA-B7 protein by flow cytometry analysis. Sample: non-fixed and non-permeabilized PBMC; gated on monocytes.

Black: Unlabelled sample was used as a control.

Red: HLA-B7 antibody [BB7.1] (GTX639674) dilution: 1:50.

Acquisition of 20,000 events were collected using a Alexa Flour 488-conjugated secondary antibody for FACS analysis.



For full product information, images and publications, please visit our [website](#).