

Ezrin (phospho Thr567) + Radixin (Thr564) + Moesin (Thr558) Antibody [HL2909]

Cat. No. GTX640252

宿主	Rabbit
克隆	Monoclonal
同种型	IgG
实验应用	WB
种属反应	Human

实验应用

应用说明

*最佳稀释倍数与浓度应由研究人员确认

Suggested dilution	Recommended dilution
WB	1:500-1:3000

以下为常规应用缩写的中文注解

WB: 免疫印迹

ICC/IF: 细胞染色

IHC-P: 石蜡切片

IHC-Fr: 冰冻切片

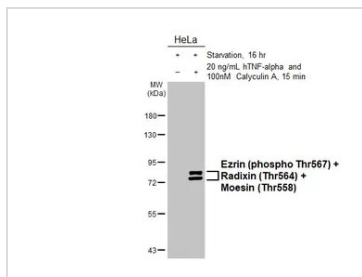
属性

形式	Liquid
存储溶液	PBS
保存剂	No preservatives
存放说明	Store as concentrated solution. Centrifuge briefly prior to opening vial. For short-term storage (1-2 weeks), store at 4°C. For long-term storage, aliquot and store at -20°C or below. Avoid multiple freeze-thaw cycles.
浓度	1 mg/ml (Please refer to the vial label for the specific concentration.)
偶联	Unconjugated
注意事项	仅供实验室使用。不适用于人类或动物的任何临床，治疗或诊断用途。不适合动物或人类食用。



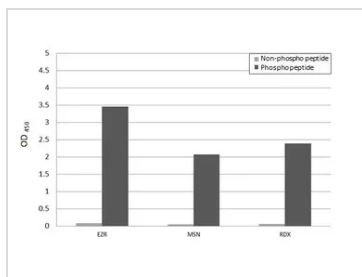
For full product information, images and publications, please visit our [website](#).

產品图片



GTX640252 WB Image

Untreated (-) and treated (+) HeLa whole cell extracts (30 µg) were separated by 7.5% SDS-PAGE, and the membrane was blotted with Ezrin (phospho Thr567) + Radixin (Thr564) + Moesin (Thr558) Antibody [HL2909] (GTX640252) diluted at 1:1000. The HRP-conjugated anti-rabbit IgG antibody (GTX213110-01) was used to detect the primary antibody.



GTX640252 Image

Specificity test was performed by coating the plate with EZR peptide, EZR (phospho Thr567) peptide, MSN peptide, MSN (phospho Thr558) peptide, RDX peptide, and RDX (phospho Thr564) peptide (62.5 ng/mL). Coated peptides were probed with Ezrin (phospho Thr567) + Radixin (Thr564) + Moesin (Thr558) Antibody [HL2909] (GTX640252) (1 µg/mL). Goat anti-rabbit IgG antibody (HRP) (GTX213110-01) (1:10000) was used to detect the bound primary antibody.



For full product information, images and publications, please visit our [website](#).