

CABP1 antibody [EPR7916]

Cat. No. GTX64031

宿主	Rabbit
克隆	Monoclonal
同种型	IgG
实验应用	WB
种属反应	Human, Mouse

实验应用

应用说明

*最佳稀释倍数与浓度应由研究人员确认

Suggested dilution	Recommended dilution
WB	Assay dependent

以下为常规应用缩写的中文注解

WB: 免疫印迹

ICC/IF: 细胞染色

IHC-P: 石蜡切片

IHC-Fr: 冰冻切片

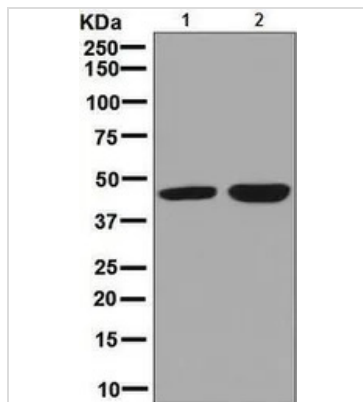
属性

形式	Liquid
存储溶液	PBS, 0.05% BSA, 50% Glycerol
保存剂	0.01% Sodium azide
存放说明	Store as concentrated solution. Centrifuge briefly prior to opening vial. For short-term storage (1-2 weeks), store at 4°C. For long-term storage, aliquot and store at -20°C or below. Avoid multiple freeze-thaw cycles.
偶联	Unconjugated
注意事项	For <i>In vitro</i> laboratory use only. Not for any clinical, therapeutic, or diagnostic use in humans or animals. Not for animal or human consumption. RabMAb® technology is covered by the following U.S. Patents, No. 5,675,063 and/or 7,429,488.



For full product information, images and publications, please visit our [website](#).

產品圖片

**GTX64031 WB Image**

WB analysis of (1) Y79 and (2) U-87 MG lysates (10 µg per lane) using CABP1 antibody [EPR7916] at a dilution of 1:1,000.



For full product information, images and publications, please visit our [website](#).