

Hepatitis C virus Core Antigen antibody [H6-29] (Biotin)

Cat. No. GTX64114

宿主	Mouse
克隆	Monoclonal
同种型	IgG2a
实验应用	WB, ICC/IF, ELISA, IHC
种属反应	Hepatitis C virus

实验应用

应用说明

*最佳稀释倍数与浓度应由研究人员确认

Suggested dilution	Recommended dilution
WB	Assay dependent
ICC/IF	Assay dependent
ELISA	Assay dependent
IHC	Assay dependent

以下为常规应用缩写的中文注解

WB: 免疫印迹

ICC/IF: 细胞染色

IHC-P: 石蜡切片

IHC-Fr: 冰冻切片

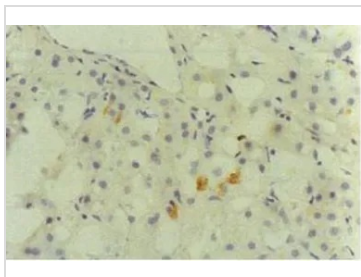
属性

形式	Liquid
存储溶液	Filter-sterilized PBS, 50% Glycerol
保存剂	No preservatives
存放说明	Store as concentrated solution. Centrifuge briefly prior to opening vial. For short-term storage (1-2 weeks), store at 4°C. For long-term storage, aliquot and store at -20°C or below. Avoid multiple freeze-thaw cycles.
浓度	Batch dependent (Please refer to the vial label for the specific concentration.)
偶联	Biotin
注意事项	仅供实验室使用。不适用于人类或动物的任何临床、治疗或诊断用途。不适合动物或人类食用。

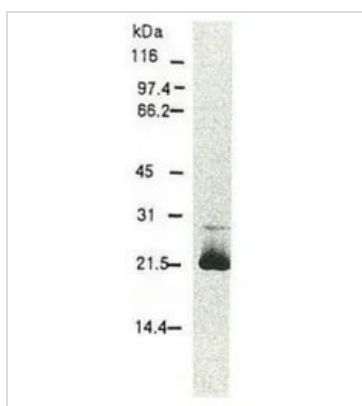


For full product information, images and publications, please visit our [website](#).

產品图片

**GTX64114 IHC Image**

Immunohistochemical detection of HCV core protein. Tissue section from a patient with chronic hepatitis C was immunostained to reveal cells expressing HCV core antigen, which are scattered in the lobules (indirect unohistochemical method, counterstained with Mayer's hematoxylin).

**GTX64114 WB Image**

Western blotting of HCV core protein. Chimp liver cells were infected with recombinant vaccinia virus containing a HCV genome cDNA and were subjected to Western blotting using this antibody. The core protein is detected as a 22-kDa band.

**GTX64114 ICC/IF Image**

Detection of HCV core protein by immunofluorescence antibody staining. Chimp liver cells were infected with recombinant vaccinia virus containing a HCV genome cDNA. After incubation for 48 hr, the cells were fixed with acetone and HCV core protein was detected by indirect immunofluorescence staining using this antibody.



For full product information, images and publications, please visit our [website](#).