

LexA antibody

Cat. No. GTX64136

宿主	Rabbit
克隆	Polyclonal
同种型	IgG
实验应用	WB, IP, ChIP assay, IHC
种属反应	E. coli

实验应用

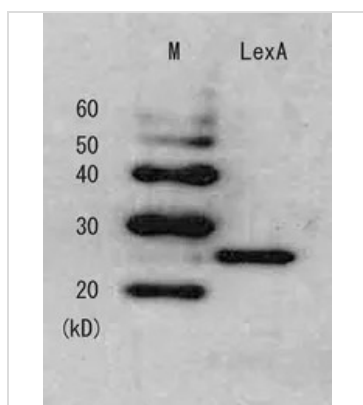
应用说明

Western blotting (1000-3000 fold dilution)

属性

形式	Liquid
存储溶液	Serum
保存剂	0.05% Sodium azide
存放说明	Store as concentrated solution. Centrifuge briefly prior to opening vial. For short-term storage (1-2 weeks), store at 4°C. For long-term storage, aliquot and store at -20°C or below. Avoid multiple freeze-thaw cycles.
浓度	Batch dependent (Please refer to the vial label for the specific concentration.)
偶联	Unconjugated
注意事项	仅供实验室使用。不适用于人类或动物的任何临床、治疗或诊断用途。不适合动物或人类食用。

产品图片



GTX64136 WB Image

Detection of LexA repressor in the E. coli whole cell lysate by this antiserum



For full product information, images and publications, please visit our [website](#).