

## RPA32 (phospho Thr21) antibody [HL3692]

**Cat. No. GTX641864**

宿主	Rabbit
克隆	Monoclonal
同种型	IgG
实验应用	WB, ICC/IF
种属反应	Human, Mouse

## 实验应用

## 应用说明

\*最佳稀释倍数与浓度应由研究人员确认

Suggested dilution	Recommended dilution
WB	1:500-1:3000
ICC/IF	Assay dependent

以下为常规应用缩写的中文注解

WB: 免疫印迹

ICC/IF: 细胞染色

IHC-P: 石蜡切片

IHC-Fr: 冰冻切片

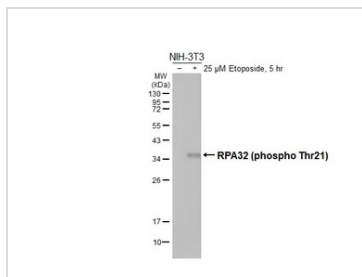
## 属性

形式	Liquid
存储溶液	PBS
保存剂	No preservatives
存放说明	Store as concentrated solution. Centrifuge briefly prior to opening vial. For short-term storage (1-2 weeks), store at 4°C. For long-term storage, aliquot and store at -20°C or below. Avoid multiple freeze-thaw cycles.
浓度	1 mg/ml (Please refer to the vial label for the specific concentration.)
偶联	Unconjugated
注意事项	仅供实验室使用。不适用于人类或动物的任何临床、治疗或诊断用途。不适合动物或人类食用。

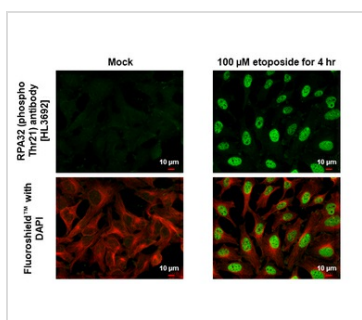


For full product information, images and publications, please visit our [website](#).

## 產品圖片

**GTX641864 WB Image**

Untreated (-) and treated (+) NIH-3T3 whole cell extracts (30  $\mu$ g) were separated by 12% SDS-PAGE, and the membrane was blotted with RPA32 (phospho Thr21) antibody [HL3692] (GTX641864) diluted at 1:1000. The HRP-conjugated anti-rabbit IgG antibody (GTX213110-01) was used to detect the primary antibody, and the signal was developed with Trident ECL plus-Enhanced.

**GTX641864 ICC/IF Image**

RPA32 (phospho Thr21) antibody [HL3692] detects RPA32 (phospho Thr21) protein by immunofluorescent analysis.

Sample: Mock and treated HeLa cells were fixed in 4% paraformaldehyde at RT for 15 min.

Green: RPA32 (phospho Thr21) stained by RPA32 (phospho Thr21) antibody [HL3692] (GTX641864) diluted at 1:500.

Red: alpha Tubulin, a cytoskeleton marker, stained by alpha Tubulin antibody [GT114] (GTX628802) diluted at 1:1000.



For full product information, images and publications, please visit our [website](#).