

MRPL48 antibody

Cat. No. GTX66815

宿主	Rabbit
克隆	Polyclonal
同种型	IgG
实验应用	WB
种属反应	Human, Mouse, Rat

实验应用

应用说明

*最佳稀释倍数与浓度应由研究人员确认

Suggested dilution	Recommended dilution
WB	1:500-1:1000

以下为常规应用缩写的中文注解

WB: 免疫印迹

ICC/IF: 细胞染色

IHC-P: 石蜡切片

IHC-Fr: 冰冻切片

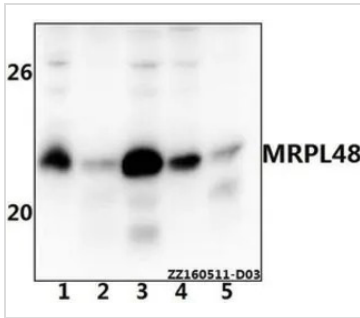
属性

形式	Liquid
存储溶液	PBS
保存剂	0.05% Sodium azide
存放说明	Store as concentrated solution. Centrifuge briefly prior to opening vial. For short-term storage (1-2 weeks), store at 4°C. For long-term storage, aliquot and store at -20°C or below. Avoid multiple freeze-thaw cycles.
浓度	1 mg/ml (Please refer to the vial label for the specific concentration.)
纯度	> 95% (by SDS-PAGE)
偶联	Unconjugated
注意事项	For In vitro laboratory use only. Not for any clinical, therapeutic, or diagnostic use in humans or animals. Not for animal or human consumption.



For full product information, images and publications, please visit our [website](#).

產品圖片

**GTX66815 WB Image**

WB analysis of various samples using GTX66815 MRPL48 antibody.

Lane1 : THP-1 whole cell lysate(40ug)

Lane2 : Hela whole cell lysate(40ug)

Lane3 : HEK293T whole cell lysate(40ug)

Lane4 : PC12 whole cell lysate(40ug)

Lane5 : AML-12 whole cell lysate(40ug)

Dilution : 1:500



For full product information, images and publications, please visit our [website](#).