

Human CRMP1 protein, His tag

Cat. No. GTX67319-pro

Species Human

Package
100 µg

实验应用

Observed MW 62 kDa.

属性

形式 Liquid

存储溶液 PBS, 10% Glycerol, 1mM DTT, 0.2mM PMSF

保存剂 No preservatives

存放说明 Store as concentrated solution. Centrifuge briefly prior to opening vial. For short-term storage (1-2 weeks), store at 4°C. For long-term storage, aliquot and store at -20°C or below. Avoid multiple freeze-thaw cycles.

浓度 1 mg/ml (Please refer to the vial label for the specific concentration.)

Region/Sequence

Full length protein, N-terminal His-Tag; MGSSHHHHHH SSGLVPRGSH MGSEFMSYQG KKSIPHITSD RLLIKGGRII
 NDDQSLYADV YLEDGLIKQI GENLIVPGGV KTIEANGRMV IPGGIDVNTY LQKPSQGMATA ADDFFQGTTRA ALVGGTTMII
 DHVVPEPGSS LLTSFEKWHE AADTKSCCDY SLHVDITSWY DGVREELEVL VQDKGVNSFQ VYMAYKDVIYQ MSDSLQYEF
 TFLKGLGAVI LVHAENGLI AQEQRILEM GITGPEGHAL SRPEELEAEA VFRAITIAGR INCPVYITKV MSKSAADIIA LARKKGPLVF
 GEPIAASLGT DGTHYWSKNW AKAAAFVTSP PLSPDPTTPD YLTSLACGD LQVTGSGHCP YSTAQKAVGK DNFTLIPEGV
 NGIEERMTV WDKAVATGKM DENQFVAVTS TNAAKIFNLY PRKGRIAVGS DADWVWDPD KLKTTAKSH KSAVEYNIFE
 GMECHGSPLV VISQKIVFE DGNINVNKGM GRFIPRKAFF EHLVQRVKIR NKVFLQGVV RGMVDGPPVE VPATPKYATP
 APSAKSSPSK HQPPPIRNLH QSNFSLGAQ IDDNNPRRTG HRIVAPPGGR SNITSLG

表达系统 E. coli

纯度 > 95% by SDS-PAGE.

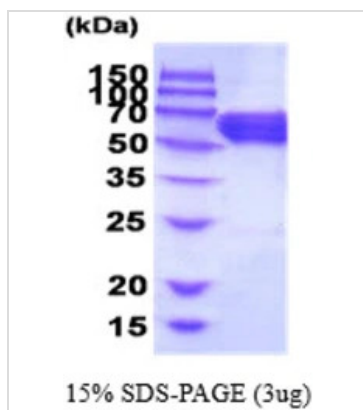
偶联 Unconjugated

注意事项 仅供实验室使用。不适用于人类或动物的任何临床、治疗或诊断用途。不适合动物或人类食用。



For full product information, images and publications, please visit our [website](#).

產品圖片

**GTX67319-pro Image**

3 μ g Human CRMP1 protein (GTX67319-pro) by SDS-PAGE under reducing condition and visualized by coomassie blue stain.



For full product information, images and publications, please visit our [website](#).