

Human ESD protein, His tag

Cat. No. GTX67380-pro

Species Human

Package
100 µg

实验应用

Observed MW 31 kDa.

属性

形式 Liquid

存储溶液 20mM Tris-HCl, 10% Glycerol

保存剂 No preservatives

存放说明 Store as concentrated solution. Centrifuge briefly prior to opening vial. For short-term storage (1-2 weeks), store at 4°C. For long-term storage, aliquot and store at -20°C or below. Avoid multiple freeze-thaw cycles.

浓度 1 mg/ml (Please refer to the vial label for the specific concentration.)

Region/Sequence

Full length protein, N-terminal His-Tag; MGSSHHHHHH SSSLVPRGSH MALKQISSNK CFGGLQKVFE HDSVELNCKM
KFAVYLPPKA ETGKCPALYW LSGLTCTEQN FISKSGYHQ SASEHGLVIA PDTSPRCNI KGEDESWDFG TGAGFYVDAT
EDPWKTNYRM YSYVTEELPQ LINANFPVDP QRMSIFGHSM GGHGALICAL KNPGKYKSVS AFAPICNPVL CPWGKKAFSG
YLGTDQSKWK AYDATHLVKS YPGSQLDILI DQ GKDDQFL LDGQLLPDNFI AACTEKKIPV VFRLQEDYDH SYYFIATFIT
DHIRHHAKYL NA

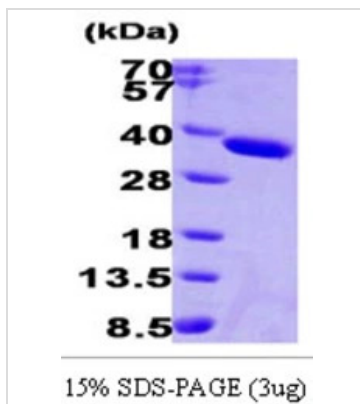
表达系统 E. coli

纯度 > 95% by SDS-PAGE.

偶联 Unconjugated

注意事项 仅供实验室使用。不适用于人类或动物的任何临床、治疗或诊断用途。不适合动物或人类食用。

产品图片



GTX67380-pro Image

3µg Human ESD protein (GTX67380-pro) by SDS-PAGE under reducing condition and visualized by coomassie blue stain.



For full product information, images and publications, please visit our [website](#).