

Human HSD17B8 protein, His tag

Cat. No. GTX67955-pro

Species Human

Package
100 µg

实验应用

Observed MW 27 kDa.

属性

形式 Liquid

存储溶液 20mM Tris-HCl, 150mM NaCl, 40% Glycerol

保存剂 No preservatives

存放说明 Store as concentrated solution. Centrifuge briefly prior to opening vial. For short-term storage (1-2 weeks), store at 4°C. For long-term storage, aliquot and store at -20°C or below. Avoid multiple freeze-thaw cycles.

浓度 0.5 mg/ml (Please refer to the vial label for the specific concentration.)

Region/Sequence

Full length protein, N-terminal His-Tag; MGSSHHHHHH SSSLVPRGSH MASQLQNRLR SALALVTGAG SGIGRAVSVR
LAGEGATVAA CDLDRAAAQE TVRLLGGPGS KEGPPRGNHA AFQADVSEAR AARCLLEQVQ ACFSRPPSW VSCAGITQDE
FLLHMSDDW DKVIAVNLKG TFLVTQAAAQ ALVSNGCRGS IINISSIVGK VGNVGTNYA ASKAGVIGLT QTAARELGRH
GIRCNSVLPG FIATPMTQKV PQKVVDKITE MIPMGHLGDP EDVADVVAFL ASED SGYITG TSVEVTGGLF M

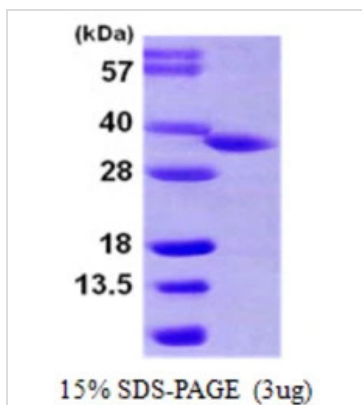
表达系统 E. coli

纯度 > 95% by SDS-PAGE.

偶联 Unconjugated

注意事项 仅供实验室使用。不适用于人类或动物的任何临床、治疗或诊断用途。不适合动物或人类食用。

产品图片



GTX67955-pro Image

3µg Human HSD17B8 protein (GTX67955-pro) by SDS-PAGE under reducing condition and visualized by coomassie blue stain.



For full product information, images and publications, please visit our [website](#).