

## Human RAB18 protein, His tag

Cat. No. GTX68304-pro

Species Human

Package

50 µg

## 实验应用

Observed MW 23 kDa.

## 属性

形式 Liquid

存储溶液 20mM Tris-HCl, 1mM DTT

保存剂 No preservatives

存放说明 Store as concentrated solution. Centrifuge briefly prior to opening vial. For short-term storage (1-2 weeks), store at 4°C. For long-term storage, aliquot and store at -20°C or below. Avoid multiple freeze-thaw cycles.

浓度 1 mg/ml (Please refer to the vial label for the specific concentration.)

## Region/Sequence

Full length protein, C-terminal His-Tag; MASMTGGQQM GRGSHMDEDV LTTLKILIIG ESGVGKSSLL LRFTDDTFDP ELAATIGVDF KVKTISVDGN KAKLAIWDTA GQERFRTLTP SYRGAQGVV LVDVTRRDT FVKLDNWLNE LETYCTRNDI VNMLVGNKID KENREVDNRNE GLKFARKHSM LFIEASAKTC DGVQCAFEEL VEKIIQTPLG WESENQNKGV KLSHREEGQG GGACGGYCSV L

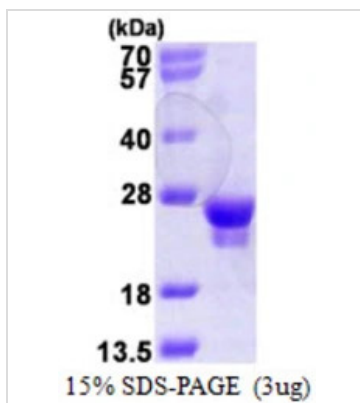
表达系统 E. coli

纯度 &gt; 90% by SDS-PAGE.

偶联 Unconjugated

注意事项 仅供实验室使用。不适用于人类或动物的任何临床、治疗或诊断用途。不适合动物或人类食用。

## 产品图片



## GTX68304-pro Image

3µg Human RAB18 protein (GTX68304-pro) by SDS-PAGE under reducing condition and visualized by coomassie blue stain.

For full product information, images and publications, please visit our [website](#).