

Human LAMTOR2 protein, His tag

Cat. No. GTX68420-pro**Species** Human**Package**

50 µg

实验应用

Observed MW 14 kDa.

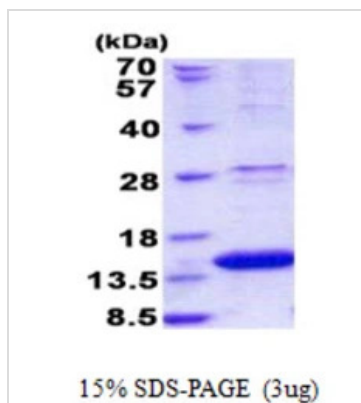
属性

形式 Liquid**存储溶液** 20mM Tris-HCl, 150mM NaCl, 10% Glycerol, 1mM DTT**保存剂** No preservatives**存放说明** Store as concentrated solution. Centrifuge briefly prior to opening vial. For short-term storage (1-2 weeks), store at 4°C. For long-term storage, aliquot and store at -20°C or below. Avoid multiple freeze-thaw cycles.**浓度** 0.25 mg/ml (Please refer to the vial label for the specific concentration.)**Region/Sequence**

Full length protein, N-terminal His-Tag; MGSSHHHHHH SSGLVPRGSH MGSMLRPKAL TQVLSQANTG GVQSTLLNN EGSLLAYSGY GDTDARVTAA IASNIWAAAYD RNGNQAFNED NLKFILMDCM EGRVAITRVA NLLLCMYAKE TVGFGMLKAK AQALVQYLEE PLTQVAAS

表达系统 E. coli**纯度** > 90% by SDS-PAGE.**偶联** Unconjugated**注意事项** 仅供实验室使用。不适用于人类或动物的任何临床、治疗或诊断用途。不适合动物或人类食用。

产品图片

**GTX68420-pro Image**

3µg Human LAMTOR2 protein (GTX68420-pro) by SDS-PAGE under reducing condition and visualized by coomassie blue stain.

For full product information, images and publications, please visit our [website](#).