

APE1 antibody [2104]

Cat. No. GTX70131

宿主	Mouse
克隆	Monoclonal
同种型	IgG1
实验应用	WB, IHC-P, ELISA
种属反应	Human, Mouse

引用文献 (1)

实验应用

应用说明

*最佳稀释倍数与浓度应由研究人员确认

Suggested dilution	Recommended dilution
WB	1:1000
IHC-P	1:5000
ELISA	1:1000-1:10000

以下为常规应用缩写的中文注解

WB: 免疫印迹

ICC/IF: 细胞染色

IHC-P: 石蜡切片

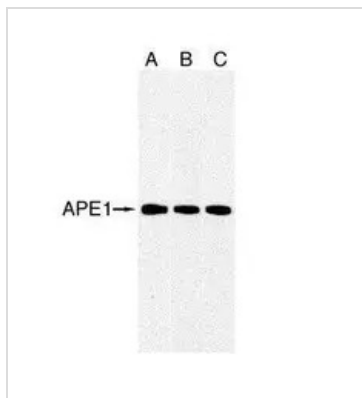
IHC-Fr: 冰冻切片

属性

形式	Liquid
存储溶液	PBS
保存剂	No preservatives
存放说明	Store as concentrated solution. Centrifuge briefly prior to opening vial. For short-term storage (1-2 weeks), store at 4°C. For long-term storage, aliquot and store at -20°C or below. Avoid multiple freeze-thaw cycles.
浓度	1 mg/ml (Please refer to the vial label for the specific concentration.)
偶联	Unconjugated
RRID	AB_367806
注意事项	仅供实验室使用。不适用于人类或动物的任何临床, 治疗或诊断用途。不适合动物或人类食用。

For full product information, images and publications, please visit our [website](#).

產品圖片

**GTX70131 WB Image**

GTX70131 at a 1/1000 dilution staining ~ 38 kDa APE 1 in 35mg of:

A) HepG2 whole cell lysate; B) HeLa whole cell lysate; C) Raji whole cell lysate.



For full product information, images and publications, please visit our [website](#).