

XAB2 antibody

Cat. No. GTX70312

宿主	Rabbit
克隆	Polyclonal
同种型	IgG
实验应用	WB
种属反应	Human

实验应用

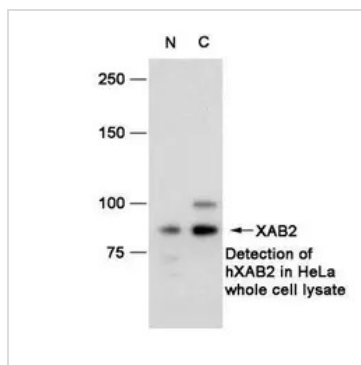
应用说明

Optimal dilutions/concentrations should be determined by the researcher.

属性

形式	Liquid
存储溶液	PBS
保存剂	No preservatives
存放说明	Store as concentrated solution. Centrifuge briefly prior to opening vial. For short-term storage (1-2 weeks), store at 4°C. For long-term storage, aliquot and store at -20°C or below. Avoid multiple freeze-thaw cycles.
浓度	0.5 mg/ml (Please refer to the vial label for the specific concentration.)
偶联	Unconjugated
RRID	AB_377596
注意事项	仅供实验室使用。不适用于人类或动物的任何临床，治疗或诊断用途。不适合动物或人类食用。

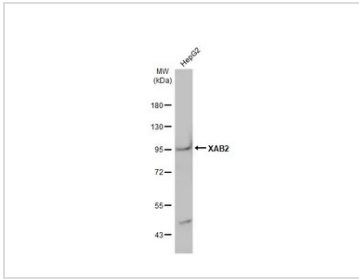
产品图片



GTX70312 WB Image



For full product information, images and publications, please visit our [website](#).



GTX70312 WB Image

Whole cell extract (30 μ g) was separated by 7.5% SDS-PAGE, and the membrane was blotted with XAB2 antibody (GTX70312) diluted at 1:1000. The HRP-conjugated anti-rabbit IgG antibody (GTX213110-01) was used to detect the primary antibody.



For full product information, images and publications, please visit our [website](#).