

FLASH antibody

Cat. No. GTX70368

宿主	Rabbit
克隆	Polyclonal
同种型	IgG
实验应用	WB
种属反应	Human, Mouse

实验应用

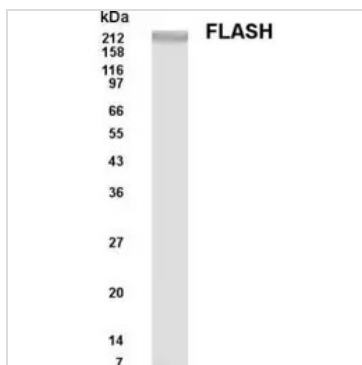
应用说明

For WB: Use at a dilution of 1:500-1:1,000. Optimal dilutions/concentrations should be determined by the researcher.

属性

形式	Liquid
存储溶液	PBS
保存剂	0.02% Sodium azide
存放说明	Store as concentrated solution. Centrifuge briefly prior to opening vial. For short-term storage (1-2 weeks), store at 4°C. For long-term storage, aliquot and store at -20°C or below. Avoid multiple freeze-thaw cycles.
浓度	1 mg/ml (Please refer to the vial label for the specific concentration.)
偶联	Unconjugated
RRID	AB_383240
注意事项	仅供实验室使用。不适用于人类或动物的任何临床，治疗或诊断用途。不适合动物或人类食用。

产品图片



GTX70368 WB Image

Western blot analysis of FLASH in NIH3T3 cell lysate.



For full product information, images and publications, please visit our [website](#).