

## PTPRE antibody

Cat. No. GTX70949

宿主	Rabbit
克隆	Polyclonal
同种型	IgG
实验应用	IHC-P
种属反应	Human

## 实验应用

## 应用说明

\*最佳稀释倍数与浓度应由研究人员确认

Suggested dilution	Recommended dilution
IHC-P	2 - 3 $\mu\text{g/ml}$

以下为常规应用缩写的中文注解

WB: 免疫印迹

ICC/IF: 细胞染色

IHC-P: 石蜡切片

IHC-Fr: 冰冻切片

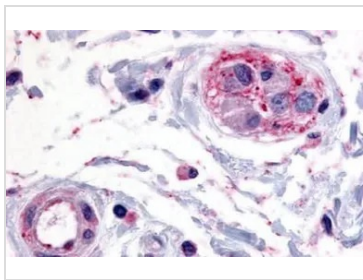
## 属性

形式	Liquid
存储溶液	PBS
保存剂	0.1% Sodium azide
存放说明	Store as concentrated solution. Centrifuge briefly prior to opening vial. For short-term storage (1-2 weeks), store at 4°C. For long-term storage, aliquot and store at -20°C or below. Avoid multiple freeze-thaw cycles.
浓度	1 mg/ml (Please refer to the vial label for the specific concentration.)
偶联	Unconjugated
RRID	AB_375445
注意事项	仅供实验室使用。不适用于人类或动物的任何临床，治疗或诊断用途。不适合动物或人类食用。

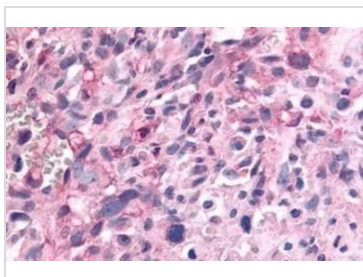


For full product information, images and publications, please visit our [website](#).

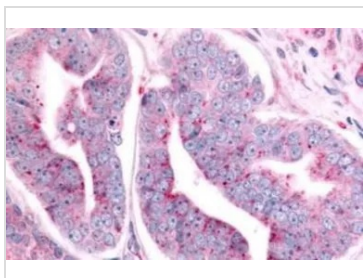
## 產品圖片

**GTx70949 IHC-P Image**

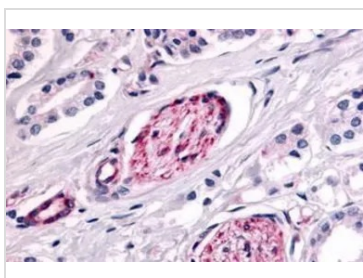
IHC-P analysis of human colon, submucosal vessel tissue using GTx70949 PTPRE antibody.  
Antigen retrieval : Heat-induced antigen retrieval

**GTx70949 IHC-P Image**

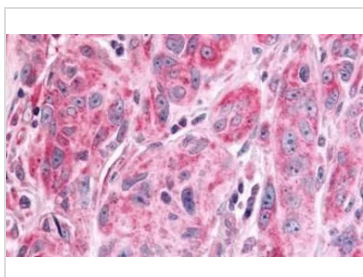
IHC-P analysis of human brain, glioblastoma tissue using GTx70949 PTPRE antibody.  
Antigen retrieval : Heat-induced antigen retrieval

**GTx70949 IHC-P Image**

IHC-P analysis of human prostate, carcinoma tissue using GTx70949 PTPRE antibody.  
Antigen retrieval : Heat-induced antigen retrieval

**GTx70949 IHC-P Image**

IHC-P analysis of human nerves in prostate carcinoma tissue using GTx70949 PTPRE antibody.  
Antigen retrieval : Heat-induced antigen retrieval

**GTx70949 IHC-P Image**

IHC-P analysis of human skin, melanoma tissue using GTx70949 PTPRE antibody.  
Antigen retrieval : Heat-induced antigen retrieval



For full product information, images and publications, please visit our [website](#).