

p53 antibody [DO-7]

Cat. No. GTX75255

宿主	Mouse
克隆	Monoclonal
同种型	IgG2b
实验应用	WB, IHC-P, IHC-Fr, FCM, IP
种属反应	Human, Bovine

引用文献 (2)

实验应用

应用说明

*最佳稀释倍数与浓度应由研究人员确认

Suggested dilution	Recommended dilution
WB	1/1,000
IHC-P	1/1,000
IHC-Fr	Assay dependent
FCM	1/50-1/100
IP	Assay dependent

Note : This product requires antigen retrieval using heat treatment prior to staining of paraffin sections. Sodium citrate buffer pH 6.0 is recommended for this purpose. Permeabilization step is needed.

以下为常规应用缩写的中文注解

WB: 免疫印迹

ICC/IF: 细胞染色

IHC-P: 石蜡切片

IHC-Fr: 冰冻切片

属性

形式	Liquid
存储溶液	PBS
保存剂	0.09% Sodium azide
存放说明	Store as concentrated solution. Centrifuge briefly prior to opening vial. For short-term storage (1-2 weeks), store at 4°C. For long-term storage, aliquot and store at -20°C or below. Avoid multiple freeze-thaw cycles.
浓度	1.0 mg/ml (Please refer to the vial label for the specific concentration.)
偶联	Unconjugated
RRID	AB_367751



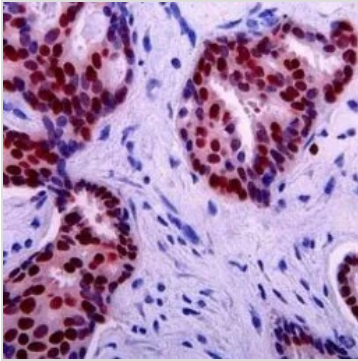
For full product information, images and publications, please visit our [website](#).

Date 2026 / 06 / 11 Page 1 of 2

注意事项

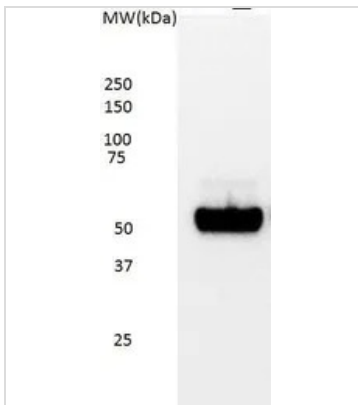
仅供实验室使用。不适用于人类或动物的任何临床，治疗或诊断用途。不适合动物或人类食用。

產品图片



GTX75255 IHC-P Image

IHC-P analysis of human breast carcinoma tissue using GTX75255 p53 antibody [DO-7].



GTX75255 WB Image

WB analysis of HEK293 cell lysate using GTX75255 p53 antibody [DO-7].



For full product information, images and publications, please visit our [website](#).