

## CTLA4 antibody [WKH203] (PE)

**Cat. No. GTX75811**

宿主	Mouse
克隆	Monoclonal
同种型	IgG1
实验应用	FCM
种属反应	Rat

## 实验应用

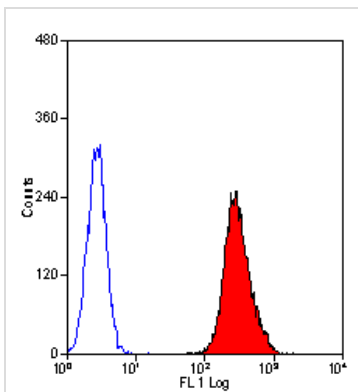
## 应用说明

For FACS: Use at an assay dependent dilution. Optimal dilutions/concentrations should be determined by the researcher.

## 属性

形式	Liquid
存储溶液	PBS, BSA
保存剂	0.02% Sodium azide
存放说明	Store as concentrated solution. Centrifuge briefly prior to opening vial. For short-term storage (1-2 weeks), store at 4°C. For long-term storage, aliquot and store at -20°C or below. Avoid multiple freeze-thaw cycles. Protect from light.
浓度	0.1 mg/ml (Please refer to the vial label for the specific concentration.)
偶联	Phycoerythrin (PE) <a href="#">Wavelength</a>
RRID	AB_379169
注意事项	仅供实验室使用。不适用于人类或动物的任何临床，治疗或诊断用途。不适合动物或人类食用。

## 产品图片

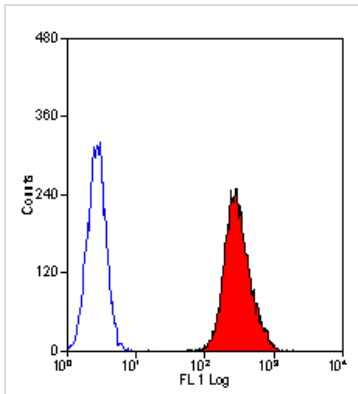


## GTX75811 FCM Image

Staining of rat CD152 transfected cell line using Mouse anti Rat CD152 (GTX75808) following permeabilisation with Leucoperm



For full product information, images and publications, please visit our [website](#).



#### GTX75811 FCM Image

Staining of rat CD152 transfected cell line using Mouse anti Rat CD152 following permeabilisation with Leucoperm



For full product information, images and publications, please visit our [website](#).