

## HLA-B7 antibody [BB7.1]

Cat. No. GTX76655

宿主	Mouse
克隆	Monoclonal
同种型	IgG1
实验应用	FCM
种属反应	Human, Primate

## 实验应用

## 应用说明

\*最佳稀释倍数与浓度应由研究人员确认

Suggested dilution	Recommended dilution
FCM	1/50

**Note : Use 10 $\mu$ l of the suggested working dilution to label 10<sup>6</sup> cells or 100 $\mu$ l whole blood.**

以下为常规应用缩写的中文注解

WB: 免疫印迹

ICC/IF: 细胞染色

IHC-P: 石蜡切片

IHC-Fr: 冰冻切片

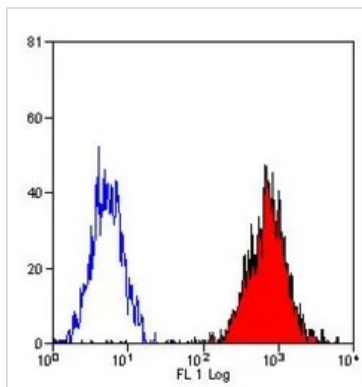
## 属性

形式	Liquid
存储溶液	PBS
保存剂	15mM Sodium azide
存放说明	Store as concentrated solution. Centrifuge briefly prior to opening vial. Store at 4°C. DO NOT FREEZE.
浓度	1 mg/ml (Please refer to the vial label for the specific concentration.)
偶联	Unconjugated
RRID	AB_377466
注意事项	仅供实验室使用。不适用于人类或动物的任何临床, 治疗或诊断用途。不适合动物或人类食用。



For full product information, images and publications, please visit our [website](#).

## 產品圖片

**GTX76655 FCM Image**

FACS analysis of human peripheral blood lymphocytes using GTX76655 HLA-B7 antibody [BB7.1].



For full product information, images and publications, please visit our [website](#).