

LIME antibody [LIME-06]

Cat. No. GTX78371

宿主	Mouse
克隆	Monoclonal
同种型	IgG1
实验应用	IP
种属反应	Human

实验应用

应用说明

*最佳稀释倍数与浓度应由研究人员确认

Suggested dilution	Recommended dilution
IP	Assay dependent

以下为常规应用缩写的中文注解

WB: 免疫印迹

ICC/IF: 细胞染色

IHC-P: 石蜡切片

IHC-Fr: 冰冻切片

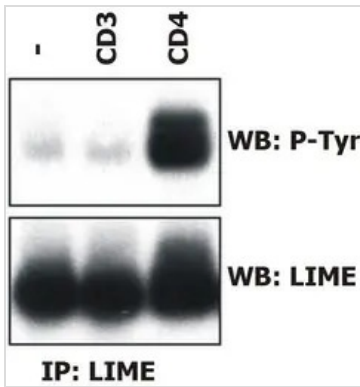
属性

形式	Liquid
存储溶液	PBS
保存剂	15mM Sodium azide
存放说明	Store as concentrated solution. Centrifuge briefly prior to opening vial. Store at 4°C. DO NOT FREEZE.
浓度	1 mg/ml (Please refer to the vial label for the specific concentration.)
偶联	Unconjugated
RRID	AB_625565
注意事项	仅供实验室使用。不适用于人类或动物的任何临床，治疗或诊断用途。不适合动物或人类食用。



For full product information, images and publications, please visit our [website](#).

產品圖片

**GTX78371 IP Image**

Induction of LIME tyrosine phosphorylation. Peripheral blood T cells were left unstimulated (-) or stimulated with anti-human CD3 (MEM-92; GTX23985) or anti-human CD4 (MEM-16; GTX78425), and LIME was immunoprecipitated from laurylmaltoside lysates with GTX78371 LIME antibody [LIME-06] (immunoaffinity sorbent) and analyzed by Western blotting to visualize tyrosine-phosphorylated LIME (top) and total LIME (bottom).



For full product information, images and publications, please visit our [website](#).