

MARCKS (phospho Ser152) antibody

Cat. No. GTX79020

宿主	Rabbit
克隆	Polyclonal
同种型	IgG
实验应用	WB
种属反应	Mouse

实验应用

应用说明

*最佳稀释倍数与浓度应由研究人员确认

Suggested dilution	Recommended dilution
WB	1:500 - 1:1000

以下为常规应用缩写的中文注解

WB: 免疫印迹

ICC/IF: 细胞染色

IHC-P: 石蜡切片

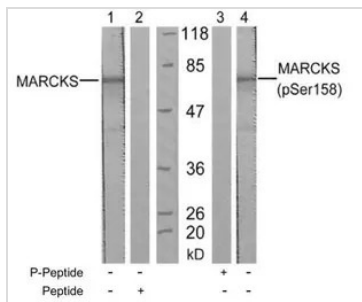
IHC-Fr: 冰冻切片

属性

形式	Liquid
存储溶液	PBS, 150mM NaCl, 0.5% BSA, 50% glycerol (Please contact us for BSA-free format)
保存剂	0.02% Sodium azide
存放说明	Store as concentrated solution. Centrifuge briefly prior to opening vial. For short-term storage (1-2 weeks), store at 4°C. For long-term storage, aliquot and store at -20°C or below. Avoid multiple freeze-thaw cycles.
浓度	Batch dependent (Please refer to the vial label for the specific concentration.)
偶联	Unconjugated
RRID	AB_11164256
注意事项	仅供实验室使用。不适用于人类或动物的任何临床，治疗或诊断用途。不适合动物或人类食用。



For full product information, images and publications, please visit our [website](#).

產品圖片

GTX79020 WB Image

WB analysis of starved NIH/3T3 cell lysate using GTX79020 MARCKS (phospho Ser152) antibody (Lane 3 and 4) and MARCKS antibody (Lane 1 and 2).



For full product information, images and publications, please visit our [website](#).