

## Cysteine String Protein alpha antibody

Cat. No. GTX79403

宿主	Rabbit
克隆	Polyclonal
同种型	IgG
实验应用	WB, FCM
种属反应	Human, Mouse, Rat

## 实验应用

## 应用说明

\*最佳稀释倍数与浓度应由研究人员确认

Suggested dilution	Recommended dilution
WB	2-4 µg/ml
FCM	3-5 µg/10 <sup>6</sup> cells

以下为常规应用缩写的中文注解

WB: 免疫印迹

ICC/IF: 细胞染色

IHC-P: 石蜡切片

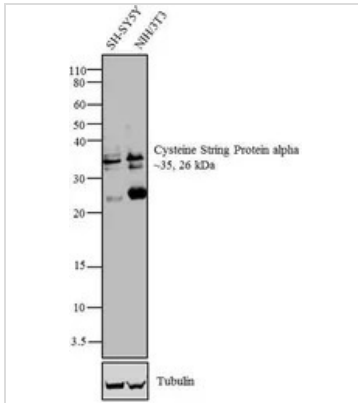
IHC-Fr: 冰冻切片

## 属性

形式	Liquid
存储溶液	PBS, 0.1% BSA
保存剂	0.05% Sodium azide
存放说明	Store as concentrated solution. Centrifuge briefly prior to opening vial. For short-term storage (1-2 weeks), store at 4°C. For long-term storage, aliquot and store at -20°C or below. Avoid multiple freeze-thaw cycles.
浓度	1 mg/ml (Please refer to the vial label for the specific concentration.)
偶联	Unconjugated
RRID	AB_11178185
注意事项	仅供实验室使用。不适用于人类或动物的任何临床, 治疗或诊断用途。不适合动物或人类食用。

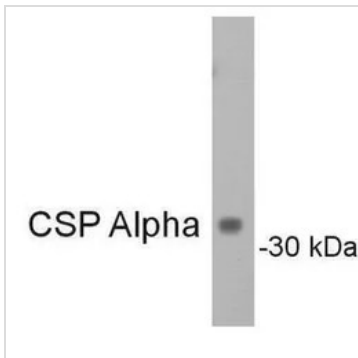


For full product information, images and publications, please visit our [website](#).

**產品圖片**

**GTX79403 WB Image**

WB analysis of whole cell lysates of SH-SY5Y (Lane 1) and NIH/3T3 (Lane 2) using GTX79403 Cysteine String Protein alpha antibody.

Dilution : 2 µg/ml


**GTX79403 WB Image**

WB analysis of rat brain samples using GTX79403 Cysteine String Protein alpha antibody.



For full product information, images and publications, please visit our [website](#).