

Ubinuclein 1 antibody [UBN1-02]

Cat. No. GTX79859

宿主	Mouse
克隆	Monoclonal
同种型	IgG
实验应用	WB, IP
种属反应	Human

实验应用

应用说明

*最佳稀释倍数与浓度应由研究人员确认

Suggested dilution	Recommended dilution
WB	Assay dependent
IP	Assay dependent

以下为常规应用缩写的中文注解

WB: 免疫印迹

ICC/IF: 细胞染色

IHC-P: 石蜡切片

IHC-Fr: 冰冻切片

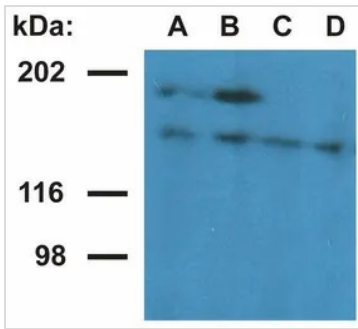
属性

形式	Liquid
存储溶液	PBS
保存剂	15mM Sodium azide
存放说明	Store as concentrated solution. Centrifuge briefly prior to opening vial. Store at 4°C. DO NOT FREEZE.
浓度	1 mg/ml (Please refer to the vial label for the specific concentration.)
偶联	Unconjugated
RRID	AB_11170383
注意事项	仅供实验室使用。不适用于人类或动物的任何临床，治疗或诊断用途。不适合动物或人类食用。



For full product information, images and publications, please visit our [website](#).

產品圖片

**GTX79859 WB Image**

WB analysis of nuclear fraction of HeLa cells using GTX79859 Ubinuclein 1 antibody [UBN1-02].

Lane A, B : The monoclonal antibody UBN1-01

Lane C, D : GTX79859

Diultion : 1 μ g/ml (lane A and C) and 5 μ g/ml (lane B and D)



For full product information, images and publications, please visit our [website](#).