

CD19 antibody [LT19] (PerCP)

Cat. No. GTX80065

宿主	Mouse
克隆	Monoclonal
同种型	IgG1
实验应用	FCM
种属反应	Human

引用文献 (1)

实验应用

应用说明

*最佳稀释倍数与浓度应由研究人员确认

Suggested dilution	Recommended dilution
FCM	10 μ l reagent / 100 μ l of whole blood or 10^6 cells in a suspension

以下为常规应用缩写的中文注解

WB: 免疫印迹

ICC/IF: 细胞染色

IHC-P: 石蜡切片

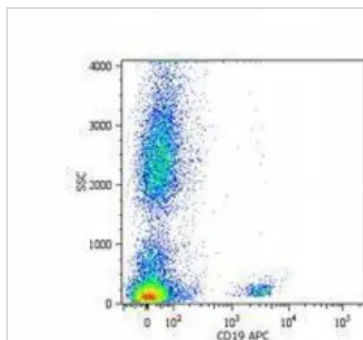
IHC-Fr: 冰冻切片

属性

形式	Liquid
存储溶液	PBS
保存剂	15mM Sodium azide
存放说明	Store as concentrated solution. Centrifuge briefly prior to opening vial. Store at 4°C. DO NOT FREEZE. Protect from light.
浓度	Batch dependent (Please refer to the vial label for the specific concentration.)
偶联	Peridinin-chlorophyll proteins (PerCP) Wavelength
注意事项	仅供实验室使用。不适用于人类或动物的任何临床，治疗或诊断用途。不适合动物或人类食用。

For full product information, images and publications, please visit our [website](#).

產品圖片

**GTX80065 FCM Image**

Surface staining of human peripheral blood cells with anti-human CD19 (LT19) APC.



For full product information, images and publications, please visit our [website](#).