

Synaptotagmin 1 (phospho Ser312) + Synaptotagmin 2 (phospho Ser309) antibody

Cat. No. GTX82583

宿主	Rabbit
克隆	Polyclonal
同种型	IgG
实验应用	WB, IHC
种属反应	Rat

实验应用

应用说明

*最佳稀释倍数与浓度应由研究人员确认

Suggested dilution	Recommended dilution
WB	Assay dependent
IHC	Assay dependent

以下为常规应用缩写的中文注解

WB: 免疫印迹

ICC/IF: 细胞染色

IHC-P: 石蜡切片

IHC-Fr: 冰冻切片

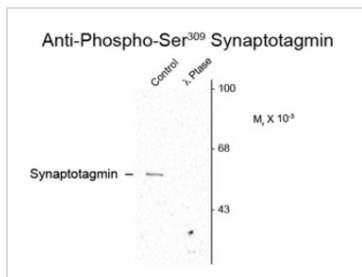
属性

形式	Liquid
存储溶液	10mM HEPES, 150mM NaCl, 0.01% BSA, 50% Glycerol
保存剂	No preservatives
存放说明	Store as concentrated solution. Centrifuge briefly prior to opening vial. For short-term storage (1-2 weeks), store at 4°C. For long-term storage, aliquot and store at -20°C or below. Avoid multiple freeze-thaw cycles.
浓度	Batch dependent (Please refer to the vial label for the specific concentration.)
偶联	Unconjugated
注意事项	仅供实验室使用。不适用于人类或动物的任何临床, 治疗或诊断用途。不适合动物或人类食用。

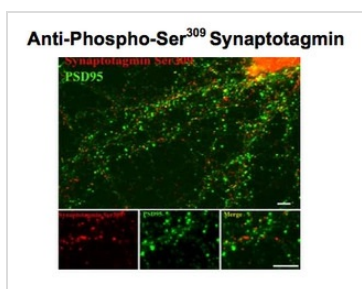


For full product information, images and publications, please visit our [website](#).

產品圖片

**GTX82583 WB Image**

Western blot of rat cortex lysate showing specific immunolabeling of the ~62k synaptotagmin phosphorylated at Ser309 (Control). Phosphospecificity is shown in the second lane (lambda phosphatase: λ-Ptase).

**GTX82583 IHC Image**

Immunostaining of 14 DIV rat cortical neurons showing synaptotagmin when phosphorylated at Ser309 in red and PSD95 in green using Synaptotagmin 1 (phospho Ser312) + Synaptotagmin 2 (phospho Ser309) antibody (GTX82583).



For full product information, images and publications, please visit our [website](#).