

## MEK1 (phospho Thr292) antibody

**Cat. No. GTX82657**

宿主	Rabbit
克隆	Polyclonal
同种型	IgG
实验应用	WB
种属反应	Human

## 实验应用

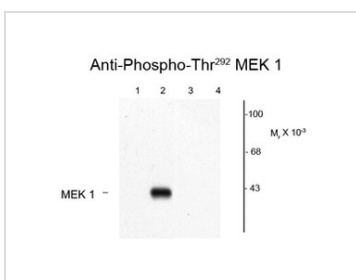
## 应用说明

Optimal working dilutions should be determined experimentally by the end user.

## 属性

形式	Liquid
存储溶液	10mM HEPES, 150mM NaCl, 0.01% BSA, 50% Glycerol
保存剂	No preservatives
存放说明	Store as concentrated solution. Centrifuge briefly prior to opening vial. For short-term storage (1-2 weeks), store at 4°C. For long-term storage, aliquot and store at -20°C or below. Avoid multiple freeze-thaw cycles.
浓度	Batch dependent (Please refer to the vial label for the specific concentration.)
偶联	Unconjugated
注意事项	仅供实验室使用。不适用于人类或动物的任何临床，治疗或诊断用途。不适合动物或人类食用。

## 产品图片



## GTX82657 WB Image

Western blots of recombinant wild type and mutant MEK 1 showing phospho-specific immunolabeling. Lanes 1 and 2 are wild type MEK 1; lanes 3 and 4 are mutant MEK 1 (Thr 200 Arg). MAP kinase was co-expressed in the samples run in lanes 2 and 4. MEK1 (phospho Thr292) antibody was used (GTX82657).



For full product information, images and publications, please visit our [website](#).