

ELK1 (phospho Ser383) antibody

Cat. No. GTX82701

宿主	Rabbit
克隆	Polyclonal
同种型	IgG
实验应用	WB
种属反应	Rat

实验应用

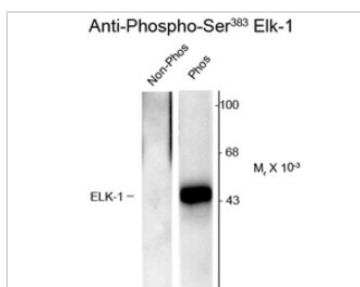
应用说明

Optimal working dilutions should be determined experimentally by the end user.

属性

形式	Liquid
存储溶液	10mM HEPES, 150mM NaCl, 0.01% BSA, 50% Glycerol
保存剂	No preservatives
存放说明	Store as concentrated solution. Centrifuge briefly prior to opening vial. For short-term storage (1-2 weeks), store at 4°C. For long-term storage, aliquot and store at -20°C or below. Avoid multiple freeze-thaw cycles.
浓度	Batch dependent (Please refer to the vial label for the specific concentration.)
偶联	Unconjugated
注意事项	仅供实验室使用。不适用于人类或动物的任何临床、治疗或诊断用途。不适合动物或人类食用。

产品图片



GTX82701 WB Image

Western blot of non-phospho- and phospho-recombinant Elk-1 showing specific immunolabeling of the ~46 Elk-1 protein phosphorylated at Ser 383 using Elk-1 (phospho Ser383) antibody (GTX82701).



For full product information, images and publications, please visit our [website](#).