

KSHV K8 alpha antibody [8C12G10G1]

Cat. No. GTX83237

宿主	Mouse
克隆	Monoclonal
同种型	IgG2a
实验应用	WB, ICC/IF, ELISA
种属反应	Kaposi's sarcoma-associated herpesvirus

实验应用

应用说明

*最佳稀释倍数与浓度应由研究人员确认

Suggested dilution	Recommended dilution
WB	1/500 - 1/2000
ICC/IF	1/200 - 1/1000
ELISA	1/10000

以下为常规应用缩写的中文注解

WB: 免疫印迹

ICC/IF: 细胞染色

IHC-P: 石蜡切片

IHC-Fr: 冰冻切片

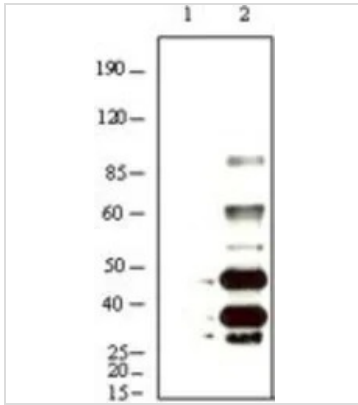
属性

形式	Liquid
存储溶液	Ascites
保存剂	0.03% Sodium azide
存放说明	Store as concentrated solution. Centrifuge briefly prior to opening vial. For short-term storage (1-2 weeks), store at 4°C. For long-term storage, aliquot and store at -20°C or below. Avoid multiple freeze-thaw cycles.
偶联	Unconjugated
注意事项	仅供实验室使用。不适用于人类或动物的任何临床、治疗或诊断用途。不适合动物或人类食用。

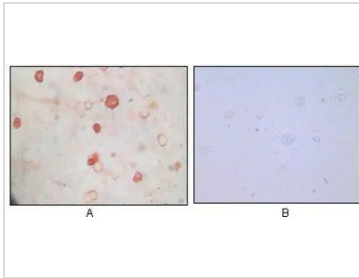


For full product information, images and publications, please visit our [website](#).

產品圖片

**GTX83237 WB Image**

WB analysis of BCBL-1 (1) and TPA induced BCBL-1 (2) cell lysate using GTX83237 KSHV K8 alpha antibody [8C12G10G1].

**GTX83237 ICC/IF Image**

ICC/IF analysis of TPA induced BCBL-1 cells (A) and uninduced BCBL-1 cells (B) with AEC staining using GTX83237 KSHV K8 alpha antibody [8C12G10G1].



For full product information, images and publications, please visit our [website](#).