

## UHMK1 antibody [2H4]

Cat. No. GTX83438

宿主	Mouse
克隆	Monoclonal
同种型	IgG2b
实验应用	WB, ICC/IF, IHC-P, FCM
种属反应	Human, Dog

引用文献 (1)

## 实验应用

## 应用说明

\*最佳稀释倍数与浓度应由研究人员确认

Suggested dilution	Recommended dilution
WB	1:2000
ICC/IF	1:100
IHC-P	1:150
FCM	1:100

以下为常规应用缩写的中文注解

WB: 免疫印迹

ICC/IF: 细胞染色

IHC-P: 石蜡切片

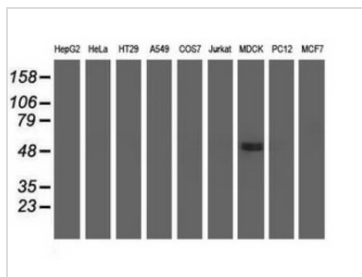
IHC-Fr: 冰冻切片

## 属性

形式	Liquid
存储溶液	PBS, 1% BSA, 50% Glycerol
保存剂	0.02% Sodium azide
存放说明	Store as concentrated solution. Centrifuge briefly prior to opening vial. For short-term storage (1-2 weeks), store at 4°C. For long-term storage, aliquot and store at -20°C or below. Avoid multiple freeze-thaw cycles.
浓度	0.82 mg/ml (Please refer to the vial label for the specific concentration.)
偶联	Unconjugated
RRID	AB_10732116
注意事项	仅供实验室使用。不适用于人类或动物的任何临床, 治疗或诊断用途。不适合动物或人类食用。

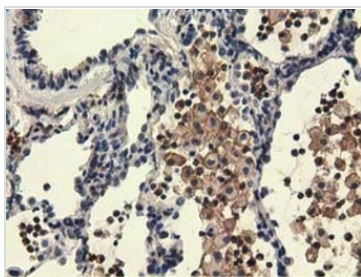
For full product information, images and publications, please visit our [website](#).

## 產品圖片

**GTX83438 WB Image**

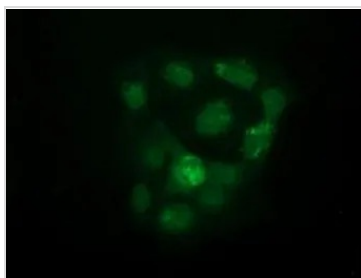
WB analysis of various cell lines using GTX83438 UHMK1 antibody [2H4].

Loading : 35 ug per lane

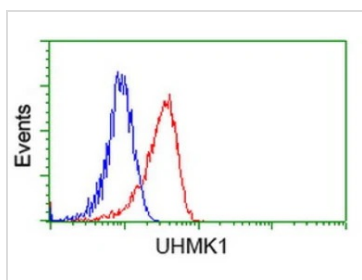
**GTX83438 IHC-P Image**

IHC-P analysis of human lung carcinoma tissue using GTX83438 UHMK1 antibody [2H4].

Antigen retrieval : Heat-induced epitope retrieval by 10mM citrate buffer, pH6.0, 100°C for 10min.

**GTX83438 ICC/IF Image**

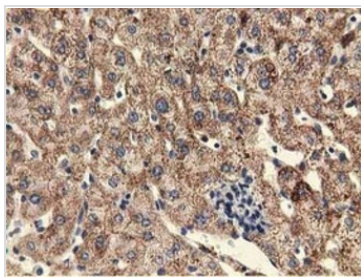
ICC/IF analysis of COS7 cells transiently transfected with UHMK1 plasmid using GTX83438 UHMK1 antibody [2H4].

**GTX83438 FCM Image**

FACS analysis of HeLa cells using GTX83438 UHMK1 antibody [2H4].

Red : Primary antibody

Blue : Negative control antibody

**GTX83438 IHC-P Image**

IHC-P analysis of human liver tissue using GTX83438 UHMK1 antibody [2H4].

Antigen retrieval : Heat-induced epitope retrieval by 10mM citrate buffer, pH6.0, 100°C for 10min.



For full product information, images and publications, please visit our [website](#).