

RAD9A antibody [5D9]

Cat. No. GTX83735

宿主	Mouse
克隆	Monoclonal
同种型	IgG2a
实验应用	WB, IHC-P
种属反应	Human, Dog, Monkey

实验应用

应用说明

*最佳稀释倍数与浓度应由研究人员确认

Suggested dilution	Recommended dilution
WB	1:1000-1:2000
IHC-P	Assay dependent

以下为常规应用缩写的中文注解

WB: 免疫印迹

ICC/IF: 细胞染色

IHC-P: 石蜡切片

IHC-Fr: 冰冻切片

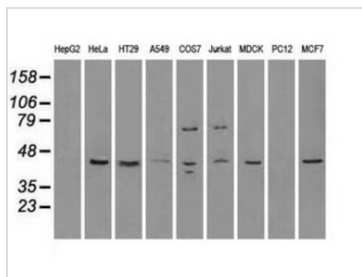
属性

形式	Liquid
存储溶液	PBS, 1% BSA, 50% Glycerol
保存剂	0.02% Sodium azide
存放说明	Store as concentrated solution. Centrifuge briefly prior to opening vial. For short-term storage (1-2 weeks), store at 4°C. For long-term storage, aliquot and store at -20°C or below. Avoid multiple freeze-thaw cycles.
浓度	1.2 mg/ml (Please refer to the vial label for the specific concentration.)
偶联	Unconjugated
注意事项	仅供实验室使用。不适用于人类或动物的任何临床、治疗或诊断用途。不适合动物或人类食用。



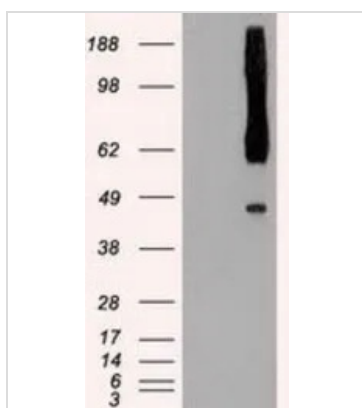
For full product information, images and publications, please visit our [website](#).

產品圖片



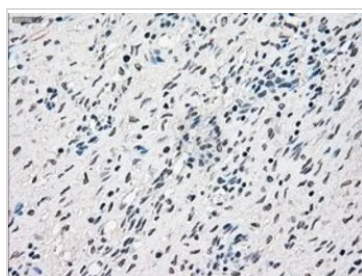
GTX83735 WB Image

WB analysis of various cell lines using GTX83735 RAD9A antibody [5D9].
Loading : 35 ug per lane



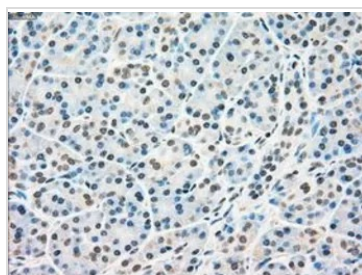
GTX83735 WB Image

WB analysis of HEK293T cells transfected with RAD9A plasmid (Right) or empty vector (Left) for 48 hrs using GTX83735 RAD9A antibody [5D9].
Loading : 5 ug per lane



GTX83735 IHC-P Image

IHC-P analysis of ovary tissue using GTX83735 RAD9A antibody [5D9].
Antigen retrieval : Heat-induced epitope retrieval by 10mM citrate buffer, pH6.0, 100°C for 10min.
Dilution : 1:50



GTX83735 IHC-P Image

IHC-P analysis of pancreas tissue using GTX83735 RAD9A antibody [5D9].
Antigen retrieval : Heat-induced epitope retrieval by 10mM citrate buffer, pH6.0, 100°C for 10min.
Dilution : 1:50



For full product information, images and publications, please visit our [website](#).