

PBLD antibody [7G5]

Cat. No. GTX83938

宿主	Mouse
克隆	Monoclonal
同种型	IgG1
实验应用	WB, ICC/IF, FCM
种属反应	Human

实验应用

应用说明

*最佳稀释倍数与浓度应由研究人员确认

Suggested dilution	Recommended dilution
WB	1:500-1:2000
ICC/IF	1:100
FCM	1:100

以下为常规应用缩写的中文注解

WB: 免疫印迹

ICC/IF: 细胞染色

IHC-P: 石蜡切片

IHC-Fr: 冰冻切片

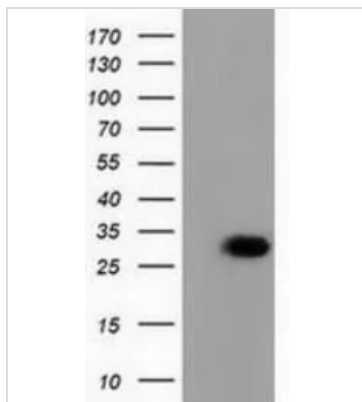
属性

形式	Liquid
存储溶液	PBS, 1% BSA, 50% Glycerol
保存剂	0.02% Sodium azide
存放说明	Store as concentrated solution. Centrifuge briefly prior to opening vial. For short-term storage (1-2 weeks), store at 4°C. For long-term storage, aliquot and store at -20°C or below. Avoid multiple freeze-thaw cycles.
浓度	0.87 mg/ml (Please refer to the vial label for the specific concentration.)
偶联	Unconjugated
注意事项	仅供实验室使用。不适用于人类或动物的任何临床, 治疗或诊断用途。不适合动物或人类食用。



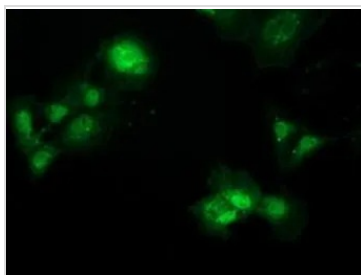
For full product information, images and publications, please visit our [website](#).

產品圖片

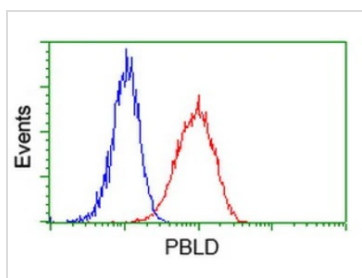
**GTX83938 WB Image**

WB analysis of HEK293T cells transfected with PBLD plasmid (Right) or empty vector (Left) for 48 hrs using GTX83938 PBLD antibody [7G5].

Loading : 5 ug per lane

**GTX83938 ICC/IF Image**

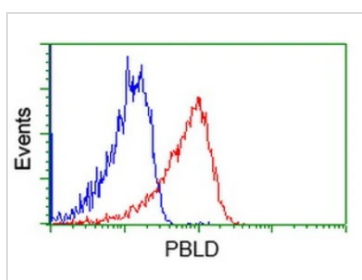
ICC/IF analysis of COS7 cells transiently transfected with PBLD plasmid using GTX83938 PBLD antibody [7G5].

**GTX83938 FCM Image**

FACS analysis of HeLa cells using GTX83938 PBLD antibody [7G5].

Red : Primary antibody

Blue : Negative control antibody

**GTX83938 FCM Image**

FACS analysis of Jurkat cells using GTX83938 PBLD antibody [7G5].

Red : Primary antibody

Blue : Negative control antibody



For full product information, images and publications, please visit our [website](#).