

## SEK1 / MKK4 antibody [8A8]

Cat. No. GTX84162

|      |                            |
|------|----------------------------|
| 宿主   | Mouse                      |
| 克隆   | Monoclonal                 |
| 同种型  | IgG2b                      |
| 实验应用 | WB, ICC/IF, IHC-P, FCM, IP |
| 种属反应 | Human, Dog                 |

## 实验应用

## 应用说明

\*最佳稀释倍数与浓度应由研究人员确认

| Suggested dilution | Recommended dilution |
|--------------------|----------------------|
| WB                 | 1:2000               |
| ICC/IF             | 1:50-1:100           |
| IHC-P              | 1:150                |
| FCM                | 1:100                |
| IP                 | 2ug/500ul            |

以下为常规应用缩写的中文注解

WB: 免疫印迹

ICC/IF: 细胞染色

IHC-P: 石蜡切片

IHC-Fr: 冰冻切片

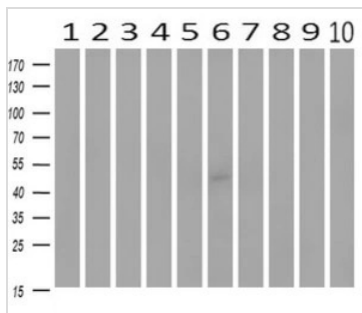
## 属性

|      |  |
|------|--|
| 形式   | Liquid   |
| 存储溶液 | PBS, 1% BSA, 50% Glycerol  |
| 保存剂  | 0.02% Sodium azide   |
| 存放说明 | Store as concentrated solution. Centrifuge briefly prior to opening vial. For short-term storage (1-2 weeks), store at 4°C. For long-term storage, aliquot and store at -20°C or below. Avoid multiple freeze-thaw cycles. |
| 浓度   | 2.36 mg/ml (Please refer to the vial label for the specific concentration.)  |
| 偶联   | Unconjugated   |
| 注意事项 | 仅供实验室使用。不适用于人类或动物的任何临床、治疗或诊断用途。不适合动物或人类食用。   |



For full product information, images and publications, please visit our [website](#).

產品圖片

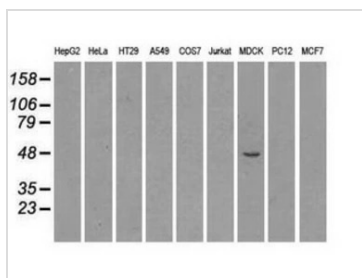


**GTx84162 WB Image**

WB analysis of human tissues (Lane 1-Testis ; Lane 2-Omentum ; Lane 3-Uterus ; Lane 4-Breast ; Lane 5-Brain ; Lane 6-Liver ; Lane 7-Ovary ; Lane 8-Thyroid gland ; Lane 9-colon ; Lane 10-spleen) using GTx84162 SEK1 / MKK4 antibody [8A8].

Loading : 10 ug per lane

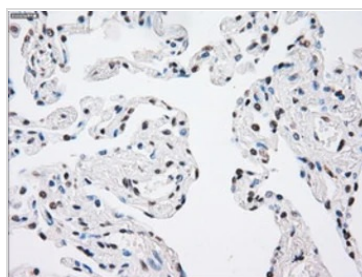
Dilution : 1:500



**GTx84162 WB Image**

WB analysis of various cell lines using GTx84162 SEK1 / MKK4 antibody [8A8].

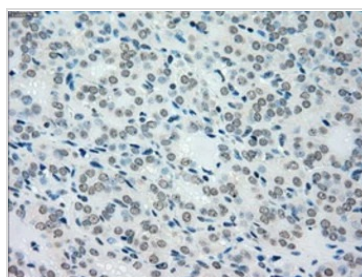
Loading : 35 ug per lane



**GTx84162 IHC-P Image**

IHC-P analysis of human lung tissue using GTx84162 SEK1 / MKK4 antibody [8A8].

Antigen retrieval : Heat-induced epitope retrieval by 10mM citrate buffer, pH6.0, 100°C for 10min.



**GTx84162 IHC-P Image**

IHC-P analysis of human thyroid carcinoma tissue using GTx84162 SEK1 / MKK4 antibody [8A8].

Antigen retrieval : Heat-induced epitope retrieval by 10mM citrate buffer, pH6.0, 100°C for 10min.



For full product information, images and publications, please visit our [website](#).